



Leamington Hastings C of E Academy

Plant, Grow, Flourish!

Newsletter number: 27

Date: 17.04.2026



Welcome back to our final term of this academic year. We hope you all enjoyed a restful and happy Easter break. The summer term is always an exciting and busy one at Leamington Hastings C of E Academy, and we have lots of events and opportunities planned for the children over the coming weeks. From curriculum enrichment to sports events, celebrations and services, there is much to look forward to.

This week, parents and carers of children in year two will have received their junior school place offers for September, and families with children in pre-school will also have received confirmation of their reception school place. Both year groups will receive communication from the respective schools over the course of the coming weeks. These milestones mark an important step in each child's learning journey, and we appreciate that this can be an emotional time for families as children prepare for the next stage of their education. Over the coming weeks, we will continue to support the children through this period of transition, helping them feel confident and prepared for what lies ahead. If you have any questions or would like support during this transition time, please do not hesitate to speak to a member of staff or contact the school office.

Some of you may have noticed that there have been some exciting developments in the EYFS outdoor area over the Easter break. A huge thank you to the Friends of Leamington Hastings, who generously gave their time to plan, organise and carry out a range of physical tasks to make these improvements possible. We are extremely grateful for their hard work and continued support, which will have a lasting impact on our youngest children's learning and play.

Thank you, as ever, for your continued support. Please keep an eye on the diary dates in this newsletter and on further communications so you don't miss any important information.

Have a lovely weekend,

Suzanne Marson

Headteacher



Pupil achievements this week

Learner of the week

Eagle Owls (EYFS):	Joseph	Snowy Owls (KS1):	Emily
--------------------	--------	-------------------	-------

Learning behaviour of the week (based on the half termly learning behaviour focus)

Eagle Owls (EYFS):	Oscar, Charlie	Snowy Owls (KS1):	Jude
--------------------	----------------	-------------------	------

Five reads raffle tickets

Eagle Owls (EYFS):	Freddie, Charlie, James, Isaac, Ella, Leo, Lara, Joseph, Sam, Millie, Sophia L, Sophia O, Arnie, Lucas	Snowy Owls (KS1):	Zara, Emily, Jude, Benjamin, Edith
--------------------	--	-------------------	------------------------------------

Caught showing values slips

Courage:	Georgia, Jacob, Will, Matteo, Jude, Finlay, Leo, Sophia L, Lucas, Isaac, James, Autumn, Sophia O	Generosity:	Lara, Ellie, Corrin, Sam, Ella, Isla, Sophia O, Autumn, Millie, Lara, Joe, Benjamin, Max, Charlie, Sam, Jack	Truthfulness:	Emily, Georgia, Jack
Friendship:	Logan (N), Archie, Freddie, Oscar, Benjamin, Ava, Logan, Isla	Forgiveness:	Edith	Thankfulness:	Zara, Arnie, Ruben

Achievement & Raffle Winners

Achievements from home include gymnastics and a treetop adventure.

Diary Dates

Any new dates will
be added in red

Wednesday 22 nd April	Earth Day Children will be learning how we can take care of the Earth, including taking part in a planting project around school. We are delighted that a small group of local residents will be supporting us with activities during the morning.
1 st May	Passport to world views afternoon- Purim Children will be learning about the festival of Purim during the afternoon.
11-15 th May	Mental Health Week During collective worship, children will be learning how to keep themselves mentally healthy.
8 th – 12 th June	Phonics screening check Children in year one and some children in year two will be taking part in the national phonics screening check.
8 th – 19 th June	Year 2 Assessments Year two assessments will be taking place over the course of these two weeks.
Wednesday 10 th June	Key Stage One trip to Coventry Cathedral Look out for more information coming home.
15 th – 21 st June	Sports week All children will take part in a daily mile this week. (Usual arrangements for school uniform / PE kit days please)
Tuesday 16 th June	Sports afternoon (all year groups) Parents are invited to join us for a sports afternoon from 2pm. See the children take part in a carousel of sports activities, followed by some sports day activities. If you would like to sit down, please bring a blanket or chair. When taking part in sport's day activities, parents will be on the playground facing the grass, with the children on the grassy area. All children to come to school in PE kits on this day.
Friday 12 th June	Pyjamarama A day to promote a love of reading and bedtime stories with the children. Children are invited to come into school wearing pyjamas or comfy clothing for the day. Children are invited to bring their favourite bedtime story to school to share with a friend, and a voluntary donation of £1 to support the work of the Booktrust who provide books for disadvantaged children is welcome, should you wish to do so.
Thursday 18 th June	Father's Day service We would like to invite Dad's, or a male representative, to come into school to join in with a Father's Day service. Only one representative per family please. Please arrive for a 2:30pm start via the School Office entrance.
Thursday 18 th June	Information evening for new reception parents If your child is due to start reception in September 2026, you are invited to join us for an

	information session from 5pm to see the classroom and find out about starting school.
Saturday 20 th June	Willougby Church Festival The children will be invited to dance around the maypole as part of the festival. More information to follow.
Monday 22 nd June	World Music Day Children are invited to come into school dressed as their favourite rock star or musician as part of developing a love of music.
Tuesday 23 rd June	Reserve sports afternoon A reserve slot in case we have to postpone sports afternoon on the 16 th due to the weather
Sunday 5 th July	Rose Queen Day Save the date – more details to follow!
Wednesday 8 th July	Country Transfer Day Children will be spending time in their new classes. More information to follow.
Friday 10 th July	National Teddy Bear's Picnic raising money for Birmingham Children's Hospital Children are invited to bring a named teddy bear into school for a picnic lunch, along with a donation towards Birmingham Children's Hospital. We have families in school who have been supported by Birmingham Children's Hospital and would like to raise as much money as we can for this worthy cause.
Monday 13 th July	Reports home to parents An end of year report for each child will be emailed home by the end of the day today
Tuesday 14 th July	End of year performance 1 Parents are invited to come into school to see the children take part in a leaver's performance in the school hall at 2:15pm. Two tickets will be available per child across the two performances (the tickets will be sent home from the school office nearer the time). Please enter and leave via the School Office.
Tuesday 14 th July	Open evening Parents are invited to come into school with their children to view their children's work and to visit classrooms from 3:30pm—5pm. Class teachers will be available to speak to about reports if you would like to.
Wednesday 15 th July	End of year performance 2 Parents are invited to come into school to see the children take part in a leaver's performance in the school hall at 9:15am. Two tickets will be available per child across the two performances (the tickets will be sent home from the school office nearer the time). Please enter and leave via the School Office. Booking information will follow.

Thursday 16th

July

End of year church service

All parents are welcome to join us in All Saints Church for an end of year church service to start at approximately 1:45pm.

We will be walking to church through the fields, please send your children to school with appropriate footwear on this day. We would be grateful for any parent volunteers to help us to walk the children to and from church - please let the school office know if you are able to help.

Current Lunch Menu



SPRING SUMMER MENU 2026



	Planet Friendly MONDAY	TUESDAY	WEDNESDAY	THURSDAY	FRIDAY	MEN KEY
WEEK ONE 13/04/26 04/05/26 25/05/26 15/06/26 06/07/26	Option One Chef's Special Creamy Chickpea Curry with Rice (VE)	Mild Mexican Chilli with Rice (VE)	Roasted Quorn, Roast Potatoes, & Gravy (VE)	Smokey Bean Burger with Wedges & Tomato Sauce (VE)	Cheese & Bean Pasty with Chips & Tomato Sauce (V)	Whole grain Plant based Adder plant protein Chef Special
	Option Two Classic Macaroni Cheese (V)	Phat Pasty Pork Sausage Roll with Potato Wedges	Roast Chicken, Stuffing, Roast Potatoes & Gravy	Spaghetti Bolognese	Fishfingers or Salmon Fishfingers with Chips & Tomato Sauce	
	Sides Vegetables of the Day	Vegetables of the Day	Vegetables of the Day	Vegetables of the Day	Vegetables of the Day	
	Dessert NEW Banana Mousse (V)	Orange Drizzle Cake (V)	Fruit Platter (VE)	Apple Flapjack (VE)	Strawberry Jelly with Mandarins (VE)	
	WEEK TWO 20/04/26 11/05/26 01/06/26 22/06/26 13/07/26	Lentil & Sweet Potato Curry with Rice (VE)	Spaghetti & Planet Friendly Tomato Saucy Meatballs (VE)	Lentil Wellington, Roast Potatoes & Gravy (VE)	Greek Spinach & Cheese Whirl with Herby Rice, Tzatziki & Salad (V)	
Option Two Cheese & Tomato Pizza with Summer Mixed Salad (V)	Beef Chilli with Rice & Sweetcorn & Cucumber Salsa	Roasted Pork or Chicken Sausage, Roast Potatoes & Gravy	Greek Chicken Pitta with Herby Rice, Tzatziki & Salad	Battered Fish with Chips & Tomato Sauce		
Sides Vegetables of the Day	Vegetables of the Day	Vegetables of the Day	Vegetables of the Day	Vegetables of the Day		
Dessert Iced Vanilla Sponge (V)	Peaches & Ice Cream (V)	Freshly Chopped Fruit Salad (VE)	Jam & Coconut Sponge with Custard (V)	Oaty Cookie (VE)		
WEEK THREE 27/04/26 18/05/26 08/06/26 29/06/26 20/07/26	Saucy Tomato Pasta (VE)	Mexican Bean Roll with New Potatoes & Rainbow Slaw (VE)	Hearty Garden Loaf with Stuffing, Mashed Potatoes & Gravy (VE)	All Day Planet Friendly Breakfast (V)	Nature Ranger Sausage and Bean Hotpot (VE)	
Option Two NEW Chinese-Style Rainbow Noodles (V)	Beef Burger with Potato Wedges & Rainbow Slaw	Roast of the Day, Mashed Potatoes & Gravy	Chef Shilpa's Chicken Korma with Rice	Fishfingers with Chips & Tomato Sauce		
Sides Vegetables of the Day	Vegetables of the Day	Vegetables of the Day	Vegetables of the Day	Vegetables of the Day		
Dessert Pineapple Upside Down Cake (V)	Cheese & Crackers (V)	Fruit Medley (VE)	Strawberry and Apple Crumble with Custard (V)	Vanilla Shortbread (VE)		

AVAILABLE DAILY: Jacket Potatoes with a choice of fillings, Salad Bar, Bread, Fruit.



Spotlight on

At Leamington Hastings C of E Academy, we use the Jigsaw PSHE programme across the school. PSHE (Personal, Social, Health and Economic education) supports children to understand themselves, build positive relationships and consider how to make healthy and safe choices.

Jigsaw is a whole-school approach to PSHE that brings together:

- emotional literacy
- social skills
- mental wellbeing
- spiritual and moral development



Learning is delivered in a calm, safe and structured way, helping children to feel confident, valued and ready to learn.

Jigsaw lessons are carefully linked to our Christian values, including:

- **Courage** – trying new things and speaking up when something doesn't feel right
- **Generosity** – showing kindness and care for others
- **Truthfulness** – understanding honesty and trust
- **Friendship** – building respectful, positive relationships
- **Forgiveness** – learning to resolve conflicts and move forward
- **Thankfulness** – recognising what we are grateful for

Through stories, discussion, reflection and practical activities, children are encouraged to live out these values in their daily school life.

Across the year, children explore six key areas in an age-appropriate way:

- **Being Me in My World** – belonging, feelings and classroom expectations
- **Celebrating Difference** – respect, diversity and kindness
- **Dreams and Goals** – perseverance and resilience
- **Healthy Me** – physical and emotional wellbeing
- **Relationships** – friendships, family and caring for others
- **Changing Me** – understanding change and keeping safe

Children are never asked to share personal information and are always supported to participate at a level they feel comfortable with.

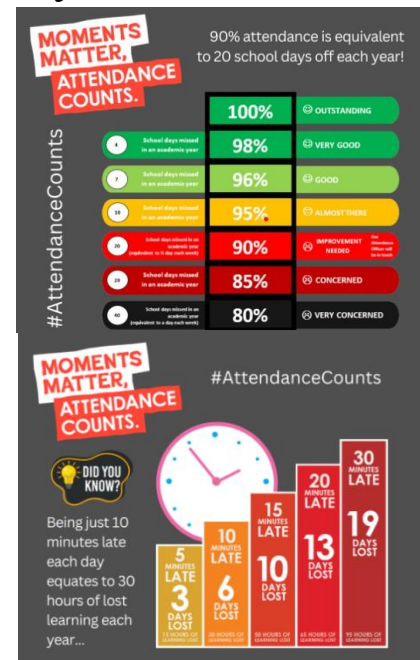
Jigsaw is also used at Dunchurch Juniors, meaning that children have a seamless approach to PSHE and that all statutory content is covered across the primary age range.

If you would like to know more about the Jigsaw programme, more information can be found on our website [here](#).

Attendance Weekly Summary

Whole School: 97.96 % (Target 97%)

		
Reception	Year 1	Year 2
98.89%	100%	90.74%



PE Days

Children should wear their P.E. kits to school on the following days. On other days, normal school uniform should be worn.



Monday	Tuesday	Wednesday	Thursday	Friday
Reception KS1				Reception KS1

After-School Clubs

Monday	Tuesday	Wednesday	Thursday	Friday
Arts & Crafts	Gardening Club	Sewing & Textiles	Cricket	Cheerleading

To book a place in an after-school club, please book via the school office.

Term Dates

Academic Year 2025/2026

Spring term 2026

End of term: Friday 27th March

Easter holiday: Monday 30th March to Friday 10th April

Summer term 2026

Start of term: Monday 13th April

Bank holiday: Monday 4th May

Half term: Monday 25th to Friday 29th May

Training Day: Monday 1st June

End of term: Friday 17th July

Training Day (Disaggregated): Monday 20th July

Summer holiday: Tuesday 21st July to Monday 31st August

Academic Year 2026/2027

Autumn term 2026

Start of term: Tuesday 1st September

Half term: Monday 26th to Friday 30th October

End of term: Friday 18th December

Christmas holiday: Monday 21st December to Friday 1st January

Spring term 2027

Start of term: Monday 4th January

Half term: Monday 15th to Friday 19th February

End of term: Thursday 25th March

Easter holiday: Friday 26th March to Friday 9th April

Summer term 2027

Start of term: Monday 12th April

Bank holiday: Monday 3rd May

Half term: Monday 31st May to Friday 4th June

End of term: Wednesday 21st July

Summer holiday: Thursday 22nd July to Wednesday 1st September

(Training day dates for 2026/2027 are yet to be set)

For Warwickshire school term dates please [click here](#).

* School and nursery are closed to all children during bank holidays, training days and holiday periods.

In Collective Worship

this week ...

In collective worship this week we have introduced our new half termly value and learning behaviour, using stories to support our understanding.

We used the story of Creation to consider how it is sometimes really difficult to tell the truth, and the story The Koala Who Could to discuss how it can take courage and resilience to put a lot of effort into something.

Christian Value this

half term



Learning Behaviour this

half term

Effort Elephant



* I put effort into completing my work.

** I select tasks that challenge me.

*** I make sure that I always complete my work to the best of my ability.

Mental Health Support



Dimensions tool



Free online personalised self-care information & support for adults and children in Coventry & Warwickshire

Challenge

Throughout our lives we are going to experience different challenges, both big and small. There will be times where these challenges are exciting and maybe other times where challenges could feel scary and uncertain. These different challenges will push us to try new things, build our resilience and teach us new things about ourselves and the world around us.

When taking on challenges, we learn that we can work towards goals, overcome any obstacles and be resilient even when something is difficult. A **growth mindset** can help us take on new challenges, it builds our confidence to have a go at things, increases our self-esteem and encourages us to keep trying, even if something doesn't work out the first time!

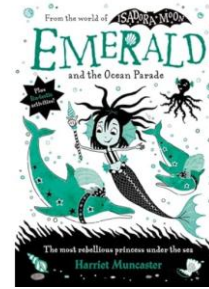
Our top tips for challenging ourselves:

- 1. Set yourself some goals** you would like to reach this time next year (long term goals). Perhaps these can be things you've always wanted to do but never tried before. Break your goals down into medium-term goals and short-term goals (goals you can set to work towards the long-term goal in a few weeks or months).
- 2. Ask for help** when needed. Challenging ourselves is not about getting through difficult times alone...sometimes we need a helping hand and that is okay!
- 3. Push yourself out of your comfort zone** this week. You might want to try a new food, learn a new hobby, start a conversation with a different friend, or put your hand up in a lesson at school. Can you think of a **SMART goal** you would like to challenge yourself with this week? Follow the QR code to learn more about SMART goals: 
- 4. Read books** with characters who overcome challenges. What strategies did the characters use to push through them? Follow the QR code to a list of books that help children face challenges: 

In Coventry and Warwickshire, for any urgent mental health concerns, contact the RISE Crisis Helpline available 24/7, by calling NHS 111. Alternatively, call 999 or visit A&E in an emergency, for example if medical attention is required.

MHST are available to support you and your school throughout the school year including term time and school holidays.
Please contact your school's Mental Health Lead for information and advice.

Book of the week



Title: Emerald and the Ocean Parade

Author: Harriet Muncaster

Edith recommended a beautifully illustrated book this week where Emerald is learning to be a mermaid princess but does not feel like one.

E-Safety tip of the week



This week's top tip for parents to keep children safe online.

Please find the [link](#) to the online safety tips.



Special Educational Needs and Disabilities

The Warwickshire Local Authority monthly SEND newsletter can be found here. [Click link](#)

The Warwickshire SEND local offer can be found here. [Click link](#)

Families can request free advice and support through Warwickshire SENDIASS [Click link](#)

Family Support

Families can access free parenting courses through Eventbrite [here](#).

Click on [Family Information Service](#) for a wide range of information to support families, or to request support.



We would like to let you know that Warwickshire as a County Council are undergoing an SEND Area Inspection carried out by Ofsted and the Care Quality Commission (CQC). Please note that this is not us as a school, but an inspection of Warwickshire County Council as a whole. As part of this inspection, inspectors are reviewing how well children and young people with special educational needs and/or disabilities (SEND) are supported across education, health and care services in the local area. Parents and carers are being invited to share their experiences through a short online survey. Your views are very important and will help inspectors understand what is working well and where improvements may be needed. Please see the letter from Ofsted below.

Area SEND inspection: survey information for parents and carers

Dear parent/carer

Ofsted and the Care Quality Commission (CQC) are visiting your area, as part of an inspection. We will be looking at arrangements for children and young people with special educational needs and/or disabilities (SEND).

We would like to hear your views about the support that your child receives. You can provide your views by completing an online survey at the following link:

<https://ofsted.smartsurvey.co.uk/p/AreaSend/10414225>

This survey is for parents/carers of children and young people with SEND aged 0-25.

Your views are important to us and will help inspectors understand your child's experience of the SEND arrangements within your area. The survey will close at 9am on 21 April 2026.

The survey is voluntary, and you do not have to take part. The responses will complement the evidence collected by inspectors during the inspection. We do not ask for your name.

If you complete this survey, you consent to the transfer of your information from SmartSurvey to Ofsted.

For more information about how CQC and Ofsted collect and use data during inspections please see their individual privacy policies: CQC privacy statement; Ofsted privacy policy

Yours sincerely

Gareth Morgan

His Majesty's Inspector