



Leamington Hastings C of E Academy

Plant, Grow, Flourish!

Newsletter number: 25

Date: 20.03.2026



We have had a brilliant week in school, making the very most of the lovely sunshine whenever we could.

In Early Years, the children have been busy creating their own outdoor Easter gardens as part of their R.E. lessons. Each garden is unique and beautifully crafted—full of imagination, natural materials, and thoughtful detail. We are incredibly proud of their hard work, and we think they all look amazing!

In Key Stage One, the children have been exploring the artwork of Hannah Höch, a pioneer of collage. Inspired by her bold and creative style, they have produced their own fantastic collage pieces. If you haven't already taken a look at the Key Stage One window, we highly recommend stopping by.

We are delighted to let you know that we have set the date for our annual Rose Queen Day. This year's event will take place on Sunday 5th July. For families who are new to our school, Rose Queen Day is our much-loved annual summer fair. The children open the event with traditional maypole dancing, and it's always a wonderful community occasion. Please save the date — we would love to see all of our families join us for what promises to be a fantastic day.

As always, thank you for your ongoing support. Wishing you a lovely weekend.

Suzanne Marson

Headteacher



Pupil achievements this week

Learner of the week

Eagle Owls (EYFS):	Isla	Snowy Owls (KS1):	Isla
--------------------	------	-------------------	------

Learning behaviour of the week (based on the half termly learning behaviour focus)

Eagle Owls (EYFS):	Archie, Benjamin (Rec)	Snowy Owls (KS1):	Ava
--------------------	------------------------	-------------------	-----

Five reads raffle tickets

Eagle Owls (EYFS):	Ella, Arnie, Sophia L, Sophia O, Leo, Lucas, Lara, Millie, James, Joe, Charlie, Isla	Snowy Owls (KS1):	Zara, Ava, Will, Jude, Benjamin Y2
--------------------	--------------------------------------------------------------------------------------	-------------------	------------------------------------

Caught showing values slips

Courage:	Everyone, Georgia, Jacob, Logan R	Generosity:	Isaac, Zara, Edith, Benjamin Y2, Will, Max, Joe, Sam	Truthfulness:	Jude, Sam, Charlie, Freddie
Friendship:	Ava, Isla, Ruben, Mrs Cuddihy	Forgiveness:	Benjamin, Charlie, Jude	Thankfulness:	Emily

Achievements from home

Achievements from home include swimming



Diary Dates

Any new dates will
be added in red

Tuesday 24 th March	Parent's evening night 1 You are invited to come into school for a 10 minute slot to talk about your child's progress so far this academic year. Please book your slot via MCAS or the school office. Appointments are available from 3:30 pm—6pm. Please enter and leave the school via the School Office entrance.
Wednesday 25 th March	Easter Church Service, All Saints Church All parents are welcome to join us in All Saints Church for an Easter church service to start at approximately 1:45pm. <i>Due to the amount of wet weather lately, we will be getting a bus to and from the church.</i>
Wednesday 25 th March	Parent's evening night 2 You are invited to come into school for a 10 minute slot to talk about your child's progress so far this academic year. Please book your slot via MCAS or the school office. Appointments are available from 3:30 pm—6pm. Please enter and leave the school via the School Office entrance.
Thursday 26 th March	EYFS Easter Fun day EYFS will be taking part in a variety of Easter fun activities on this day.
Friday 27 th March	Passport to world views afternoon—Rama Navami Children will learn about the festival of Rama Navami during the afternoon.
Wednesday 15 th April	World Art Day
Wednesday 22 nd April	Earth Day
1 st May	Passport to world views afternoon- Purim
11-15 th May	Mental Health Week
Sunday 5 th July	Rose Queen Day <i>Save the date – more details to follow!</i>

Current Lunch Menu

Autumn Winter 2025/2026		MONDAY	TUESDAY	WEDNESDAY	THURSDAY	FRIDAY
WEEK ONE 03.11.25 24.11.25 15.12.25 05.01.26 26.01.26 16.02.26 09.03.26	Option One	Plant Balls in Tomato Sauce with Rice	Beef Lasagne with Garlic Bread	Roast Chicken, Stuffing, Roast Potatoes and Gravy	NEW Chicken Biryani	Fishfingers with Chips & Tomato Sauce <small>(Salmon Fish Fingers Available)</small>
	Option Two	Autumn Vegetable Lasagne	Beetroot and Lentil Burger in a Bun with Potato Wedges	Vegetarian Wellington with Roast Potatoes and Gravy	NEW BBQ Sausage Pasta with Garlic Bread	Cheese and Bean Pasty with Chips and Tomato Sauce
	Vegetables	Vegetables of the Day	Vegetables of the Day	Vegetables of the Day	Vegetables of the Day	Vegetables of the Day
	Dessert	Cheese and Crackers	NEW Apple Crumb Cake with Custard	Fruit Medley	Jelly with Mandarins	Syrup Sponge with Custard
WEEK TWO 10.11.25 01.12.25 22.12.25 12.01.26 02.02.26 23.02.26 16.03.26	Option One	Classic Cheese and Tomato Pizza with Wedges	Spaghetti Bolognese	CHICKEN SHACK BBQ Chicken or Quorn with Seasoned Potatoes and Sweetcorn Salsa	Meatballs in Tomato Sauce with Rice	Fishfingers with Chips & Tomato Sauce
	Option Two	Mild Mexican Chili with Rice	Vegan Spaghetti Bolognese		Creamy Chickpea and Coconut Curry with Rice	Cheese Whirl with Chips and Tomato Sauce
	Vegetables	Vegetables of the Day	Vegetables of the Day	Vegetables of the Day	Vegetables of the Day	Vegetables of the Day
	Dessert	NEW Gingerbread Cookie	Chocolate and Beetroot Brownie with Chocolate Sauce	Fruit Salad	Sticky Toffee Apple Crumble with Custard	Vanilla Shortbread
WEEK THREE 17.11.25 08.12.25 29.12.25 19.01.26 09.02.26 02.03.26 23.03.26	Option One	Macaroni Cheese	NEW Chicken Enchilada Bake with Paprika Wedges	Sausage with Roast Potatoes and Gravy	Caribbean Mild Caribbean Chicken with Golden Rice	Fishfingers with Chips & Tomato Sauce
	Option Two	NEW Chels Special Lentil Curry with Rice	Tomato Pasta	Vegan Sausage and Roast Potatoes with Gravy	Caribbean Stew with Golden Rice	Red Pepper Frittata with Chips & Tomato Sauce
	Vegetables	Vegetables of the Day	Vegetables of the Day	Vegetables of the Day	Vegetables of the Day	Vegetables of the Day
	Dessert	Oaty Cookie	Pear Crumble with Custard	Fruit Salad	NEW Jamaican Ginger Cake with Custard	Cornflake Tart
MENU KEY		Added Plant Protein	Wholemeal	Vegan	Chef's Special	ALLERGY INFORMATION: If you would like to know about particular allergens in foods please ask a member of the catering team for information. If your child has a school lunch and has a food allergy or intolerance you will be asked to complete a form to ensure we have the necessary information to cater for your child. We use a large variety of ingredients in the preparation of our meals and due to the nature of our kitchens it is not possible to completely remove the risk of allergen cross contact.
Available Daily: - Freshly cooked jacket potatoes with a choice of filling - fresh Bread - Daily salad selection - Fruit						
caterlink feeding the imagination						

KIDS EASTER CLUB

£23

KIDS HOLIDAY CLUB IN A SAFE & WELCOMING ENVIRONMENT!
FUN, EXCITING ACTIVITIES FOR CHILDREN
 5-11 YEARS
 9AM - 3.30PM
 EARLY DROP OFF & LATE PICK UP AVAILABLE

Monday 30th & Tuesday 31st March
Wednesday 1st & Thursday 2nd April

MAKE NEW FRIENDS, TRY SOMETHING NEW & HAVE SO MUCH FUN!

Leamington Hastings COFE Academy
 Birdingbury Road, Hill, Rugby
 Warwickshire
 CV23 8EA

BOOK NOW

07823322803/07815991083
 allstarkidsclub@gmail.com

[More Information](#)

HOLY WEEK SERVICES 2026

Palm Sunday - 29/03/2026

9am Stations of the cross at St Nicholas, Frankton
 11am Communion at All Saints, Stretton-on-Dunsmore
 11am Communion at St Nicholas, Willoughby

Holy Wednesday - 1/04/2026

9.30am Communion at St Leonards, Birdingbury

Maunder Thursday - 2/04/2026

6pm Communion at All Saints, Leamington Hastings
 7.30pm Communion at All Saints, Stretton-on-Dunsmore

Good Friday - 3/04/2026

10.30-12.00 noon Drop in Cross Hunt at St Leonard's, Birdingbury
 3pm Reflective Service at St Nicholas, Frankton

Easter Sunday - 5/04/2026

7am Sunrise service at All Saints, Stretton-on-Dunsmore
 9am Celtic Communion at St Peter's, Grandborough
 9am BCP Communion at St Nicholas, Frankton
 11am Communion at All Saints, Leamington Hastings
 11am Communion at St Leonards, Birdingbury

Draycote & Leam Valley Benefice
www.draycoteandleamvalleybenefice.com

Find us on Facebook

Spotlight on

Grammar

Grammar supports the development of children's speaking, listening, reading and writing skills. Having a good knowledge and use of grammar allows your child to communicate their ideas and feelings, along with helping them choose the right language for any situation.

By the end of primary school, your child will be expected to understand and use the grammar and punctuation set out in the National Curriculum. Some words, like expanded noun phrases and blending, can seem a bit daunting, but children will learn to use this vocabulary as they are taught it in school. Once the children reach Key Stage One, they will learn how to recognise and use grammar terms that are used within speaking, reading and writing. The grammar terms taught in years one and two, along with an explanation of their meanings, can be found in the images below.

Year 1

Vocabulary, Grammar and Punctuation Terminology

Letter
The English alphabet is made up of 26 Letters. Each letter has a letter name and a sound. 'A' and 'Z' are the first and last letters of our alphabet, these should be known in order.

Capital Letter
A capital letter is a letter from the alphabet. They are used at the beginning of a sentence and for proper nouns - person, place, personal pronoun 'I' or specific thing.
Jack
Scotland
Jack Russell
(the name of a dog breed)

Plural Word
A word that refers to more than one person or thing. The spelling rule must be used for adding -s or -es.
cats
foxes

Sentence
A sentence is a collection of words joined together, beginning with a capital letter, leaving spaces between each word and ending with punctuation. Sentences can be joined together using 'and'.
The man went to market.
He bought a cow.
The man went to market **and** he bought a cow.

Full Stop
A full stop is used at the end of sentence. This tells the reader to take a pause.
The man took his prize pig to the market.

Singular Word
A word that refers to only one person or thing.
cat.
Beth



Year 1 Vocabulary, Grammar and Punctuation Terminology

Word Spelling
A word is a group of sounds joined together to form a word. Spelling is important as this helps the reader to understand the writing. Some words are common exception words and cannot be 'sounded out'.
c-a-t
f-l-igh-t
was (common exception)

Noun
A noun is a word that names a person, place or thing.
Sam went to the **playground**.
She played with the **ball**.

Omitted Apostrophe
An apostrophe would be used in place of a missing letter. This is when two words have been joined together to create a shorter word, known as a contraction.
I + will = I'll
I + am = I'm
we + will = we'll




Prefixes and Suffixes
Words where no change is needed to the root words can be changed to add -ing, -ed, -er and -est.
Buzzing Started Higher
Brightest

Punctuation Marks
Punctuation marks are important because they show the reader where sentences start and end. They also help to change how the reader understands the writing.

Question Mark
A question mark is used at the end of a sentence that asks a question.
What time is lunch?

Exclamation Mark
An exclamation mark is used after a word or sentence to express a strong feeling or excitement or anger.
"Wow! Look up there!" Tom shouted.
"Ouch! That hurt!" Sam yelled as he sat on a pin.

Compound Word
Compound words are two or more words joined together to make a new word.
fair + ground = fairground



Spotlight on

Year 2

Vocabulary, Grammar and Punctuation Terminology

Expanded Noun Phrase

In a sentence, an expanded noun phrase describes more information about the noun.

If 'dog' is the noun, a noun phrase gives more information about the dog.

The **scruffy dog** likes to play in the sand pit.

There can be more than one noun phrase in a sentence.

The **scruffy dog** likes to play in the **deep sand pit**.



Adjective

An adjective is a word that describes a noun or pronoun.

the **blue** butterfly

the **tallest** man



Verb

A verb is a word that describes an action.

sing **run** **march**

Adverb

An adverb is a word that describes a verb, adjective or another adverb in a sentence.

You can describe the verb,

The boy jumped **high**.

You can describe the adjective,

The **dark** green grass.

You can describe the adverb,

The man talked **very** quickly.

Tense

A tense tells the reader when something happens. If it has already happened, it is in the past tense. If it is happening now, it is in the present tense and if it will happen it is the future tense.

The man **kicked** the ball.

The man **is kicking** the ball.

The man **will kick** the ball.

twinkl

Year 2 Vocabulary, Grammar and Punctuation Terminology

Suffixes

A letter or group of letters can be added to the end of a word to make a new word with a slightly different meaning.

Adding -ment can change a verb into a noun.

enjoy**ment**

Adding -ful or -less can change a verb or noun into an adjective.

careful

careless

Adding -ness can change an adjective into a noun.

sad**ness**

Adding -ly can change an adjective into an adverb.

proud**ly**



Possessive Apostrophe

A possessive apostrophe is used to show a noun is owned by a single person.

The man's dog.

The girl's pen.

Spelling Rules

Spelling rules are used to help with spellings, such as,

-ge and -dge at the end of words.

badge

/s/ sound spelt c before e, I and y

race

/n/ sound spelt kn and gn at the beginning of words.

knock

/r/ sound spelt wr at the beginning of words.

write

/l/ sound spelt -le at the end of words

table

/i/ sound spelt -y at the end of words

cry

Command Sentences

A sentence that orders or instructs.

Leave the building now.

Statement Sentences

A sentence that includes a fact, opinion or idea.

Ruth likes to play in the mud.

All children at the primary school wear red jumpers.

twinkl

Year 2 Vocabulary, Grammar and Punctuation Terminology

Subordination and Co-ordination

Subordination is using 'when', 'if', 'that' and 'because' to connect two clauses together. The subordination adds additional information but will not work on its own.

The bus stopped **because** the traffic lights turned red.

Co-ordination is using 'or', 'and' or 'but' to join words that link together as part of a sentence. The sentences can be joined together and will make sense on their own.

I was feeling ill **but** I still went to work.

I was feeling ill **and** I still went to work.

I was feeling ill **or** I still went to work.

I was feeling ill **but** I still went to work.

Punctuation Marks

Punctuation marks are important because they show the reader where sentences start and end. They also help to change how the reader understands the writing.

•

!

?

Comma

A comma is used to break up a phrase or separate words in a list.

I went to the shop and bought eggs, chicken, milk and cheese.

I went to the shop and bought eggs, chicken, milk and cheese.

I went to the shop and bought eggs, chicken, milk and cheese.

I went to the shop and bought eggs, chicken, milk and cheese.

•

!

?

,

twinkl

There are simple things you can do at home to support your child's developing grammar and punctuation skills.

1. Read to your child

While children learn about language from speaking and listening, the type of language we use in writing is often different from that in speech. Reading regularly to your child, especially books that they cannot yet read independently, is a great way of developing their vocabulary and their understanding of how language works.

2. Encourage your child to read to you




Making time to hear your child read isn't just good for their reading. Through frequently seeing words in print, they will have the opportunity to see how the punctuation and grammar are used to share meaning.

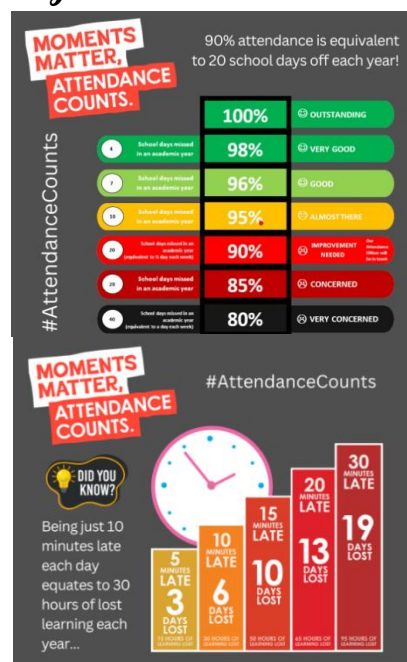
When you read, take some time to look at the punctuation and talk about what it is telling the reader to do. For example, you could show your child how a question mark tells you to raise your voice at the end of the sentence to indicate a question being asked. Children may use the word 'prosody' when reading aloud – this is reading with the correct intonation and expression.

Explore how you can show the 'feeling' behind an exclamation mark. Are the characters shouting? Has something unexpected happened? Has something gone wrong?

Attendance Weekly Summary

Whole School: 96.62% (Target 97%)

		
Reception	Year 1	Year 2
97%	96%	90%



PE Days

Children should wear their P.E. kits to school on the following days. On other days, normal school uniform should be worn.



Monday	Tuesday	Wednesday	Thursday	Friday
Reception KS1				Reception KS1

After-School Clubs

Monday	Tuesday	Wednesday	Thursday	Friday
Arts & Crafts	Gardening Club	Multi Sport	Tennis	Street Dance

To book a place in an after-school club, please book via the school office.

Term Dates

Academic Year 2025/2026

Spring term 2026

End of term: Friday 27th March

Easter holiday: Monday 30th March to Friday 10th April

Summer term 2026

Start of term: Monday 13th April

Bank holiday: Monday 4th May

Half term: Monday 25th to Friday 29th May

Training Day: Monday 1st June

End of term: Friday 17th July

Training Day (Disaggregated): Monday 20th July

Summer holiday: Tuesday 21st July to Monday 31st August

Academic Year 2026/2027

Autumn term 2026

Start of term: Tuesday 1st September

Half term: Monday 26th to Friday 30th October

End of term: Friday 18th December

Christmas holiday: Monday 21st December to Friday 1st January

Spring term 2027

Start of term: Monday 4th January

Half term: Monday 15th to Friday 19th February

End of term: Thursday 25th March

Easter holiday: Friday 26th March to Friday 9th April

Summer term 2027

Start of term: Monday 12th April

Bank holiday: Monday 3rd May

Half term: Monday 31st May to Friday 4th June

End of term: Wednesday 21st July

Summer holiday: Thursday 22nd July to Wednesday 1st September

(Training day dates for 2026/2027 are yet to be set)

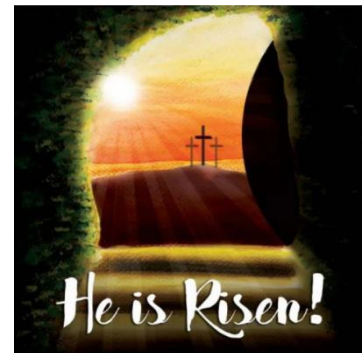
For Warwickshire school term dates please [click here](#).

* School and nursery are closed to all children during bank holidays, training days and holiday periods.

In Collective Worship

this week ...

In collective worship this week we have been learning our songs for our Easter church service. We have also started to think about the significance of the Easter story for Christians, and enjoyed finding out about Pokemon as part of our Picture News assembly.



Christian Value this

half term



Learning Behaviour this

half term

Recap Rabbit



* I can read through my work with an adult and correct a mistake.

** I can read through my work independently to make corrections.

*** I can make additions to my work to make improvements.

Mental Health Support



MHST
Mental Health in Schools Team
Tips For Wellness

Self-Care

Self-care is all about the little things we do to help ourselves feel better or to keep ourselves feeling good. This is a great way to look after our mental health and wellbeing. Self-care involves 'checking in' with yourself and thinking 'how do I feel today?' and understanding 'what do I need today?' Self-care looks different for everybody. What works for one person may not work for someone else!

Our tips for self-care:

- Taking time-out when we are feeling overwhelmed.
- Making time for an activity which makes us feel good e.g., taking a bath, listening to music, going for a walk, or playing a game you enjoy.
- Doing the basic things to look after ourselves e.g., eating and sleeping well.
- Practise self-care by asking yourself the questions in the box below:

How do I feel today? What do I need today? Do I need physical or mental self-care? When can I add self-care into my day? Make time to do it! Repeating these Self-Care check-ins at least once each day can help improve our mental health.

Make time for a relaxation activity. Scan the QR codes below for more information around self-care. Why not try the mindfulness activities in the QR codes below too!

Primary resources: Self-Care Mindfulness

Secondary resources: Self-Care Mindfulness

Watch the Mindfulness animation: The Mindfulness in Schools Project has lots of other resources too.

In Coventry and Warwickshire, for any urgent mental health concerns, contact the RISE Crisis Helpline available 24/7, by calling NHS 111. Alternatively, call 999 or visit A&E in an emergency, for example if medical attention is required.

MHST are available to support you and your school throughout the school year including term time and school holidays.

Please contact your school's Mental Health Lead for information and advice.

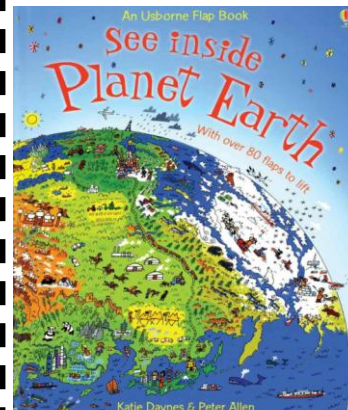
Book of the week

Title: See inside Planet Earth

Author: Katie Daynes & Peter Allen

Recommended by: Benjamin KS1

Benjamin has chosen a non-fiction book from the KS1 classroom filled containing amazing facts about the Earth, including its gases, oceans, mountains, and changing climates. His favourite topic was watery world with numerous facts found hidden behind flaps.



E-Safety tip of the week



This week's top tip for parents to keep children safe online.

Please find the [link](#) to the online safety tips.



Special Educational Needs and Disabilities

The Warwickshire Local Authority monthly SEND newsletter can be found here. [Click link](#)

The Warwickshire SEND local offer can be found here. [Click link](#)

Families can request free advice and support through Warwickshire SENDIASS [Click link](#)

Family Support

Families can access free parenting courses through Eventbrite [here](#).

Click on [Family Information Service](#) for a wide range of information to support families, or to request support.





**Rugby Borough Children and Family Centres (CFC)
Easter Holidays 30th March to 12th April 2026**



Monday

Walk-in Wardrobe & Toy Library
Pre-loved clothes for 0-5's
9.30am to 11.30am
Claremont CFC

Family Time
Aimed at 0-8yrs
10.00am to 11.30am
Long Lawford CFC
30th March only

Baby Self-Weigh Drop in
9.30am to 12.00pm
Claremont CFC
30th March

**Portrait Photography Day
Toddlers and Sibling groups**
With Drop in Toddler Time
9.00 am to 4.30pm
Claremont CFC
30th March
Booking Required

Baby Time
Non-walkers from birth
1.30-2.30pm
Long Lawford CFC
30th March

**BANK HOLIDAY 6th APRIL,
ALL CENTRES CLOSED**

Tuesday

Family Time
Aimed at 0-8yrs
10.00am to 11.30 am
Boughton Leigh CFC

Baby Time
Non-walkers from birth
10.00am to 11:00am
**The Barn @ Houlton
(CV23 1AL)**

Baby Time
Non-walkers from birth
1:30pm to 2:30pm
Boughton Leigh CFC

Mindful Makers
Yoga and Arts & Crafts
For 5-11yrs
1.00pm-3.00pm
Claremont CFC
Booking Required

Family Time
Aimed at 0-8yrs
1.30pm to 3.00pm
Long Lawford CFC
7th April Only

Wednesday

Little Stars
For children with
additional needs
10.00am to 11.00am
Claremont CFC

Walk-in Wardrobe
Pre-loved clothes for 0-5's
12 noon to 2.00pm
Claremont CFC

Family Time
Aimed at 0-4yrs
1.30pm to 2.30pm
**Cawston Community
Hall
(CV22 7GU)**

Baby Time
Non-walkers from birth
1:30pm to 2:30pm
Claremont CFC

**Please note the changes in times to some of the
groups from our regular term time timetable**

Thursday

Family Time
Aimed at 0-8yrs
10.00am to 11.30 am
Claremont CFC

Tweenie Time
Aimed cruisers and
babies just starting to
walk
1.30pm-2.30pm
Claremont CFC

Baby Time
Non-walkers from birth
1.20-2.30pm
Long Lawford CFC
9th April Only

To view all our
sessions
scan the QR code or
follow the link:
<https://rugbycfc.eventbrite.com>



Friday

**Baby Self-Weigh
Drop in**
9.30am to 12pm
Boughton Leigh CFC

Toddler Time
Aimed to 0-4yrs
10.00am to 11:30am
Rogers Hall
10th April Only

**BANK HOLIDAY 3rd
APRIL, ALL CENTRES
CLOSED**

Saturday

**Saturdays
Next Saturdays
sessions**
11th April
10.00am to 11.30am
Claremont CFC

**Webinar for parents,
carers and young
people with SEND**

**Monday
16 March,
7-8pm,
online**

Learn more
about **IMPACT**
and how you can
help shape
**SEND services in
Warwickshire**



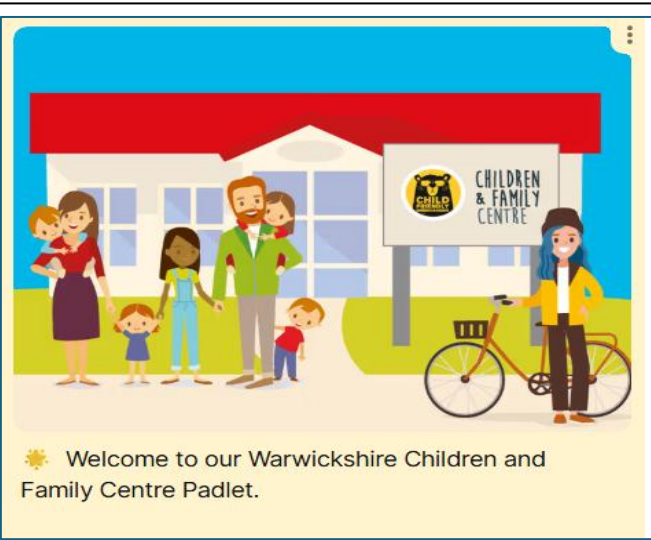



Please click on the link [Warwickshire's Young People's Forum for SEND - IMPACT](#)



9 High Street, Rugby, Warwickshire, CV21 3BG
Monday - Saturday 9:30am - 5:30pm
enquiry@huntsbookshop.com
01788 551867

Remember to visit
the shop to
use your world
book day voucher.



Welcome to our Warwickshire Children and Family Centre Padlet.

Families are invited to share their thoughts about Warwickshire's Children and Family Centres at www.warwickshire.gov.uk/myvoice

RUGBY & SURROUNDING VILLAGES

allsorts
16 YEARS
March/May 26
for parents and children 0-12

Please click on the link to view [Allsorts Rugby Mar / Apr 2026](#)