



# Leamington Hastings C of E Academy

*Plant, Grow, Flourish*



Newsletter number: 12

Date: 29.11.24

Christmas has well and truly arrived at Leamington Hastings! The children are starting to rehearse their Christmas play, we have taken part in a Posada with St Nicholas Church from Willoughby (see the collective worship section) and the children have made decorations ready for the Willoughby Tree Festival. Everyone is welcome to go along to St Nicolas Church in Willoughby on Friday 6th and Saturday 7th December to see the tree festival and vote for their favourite tree!

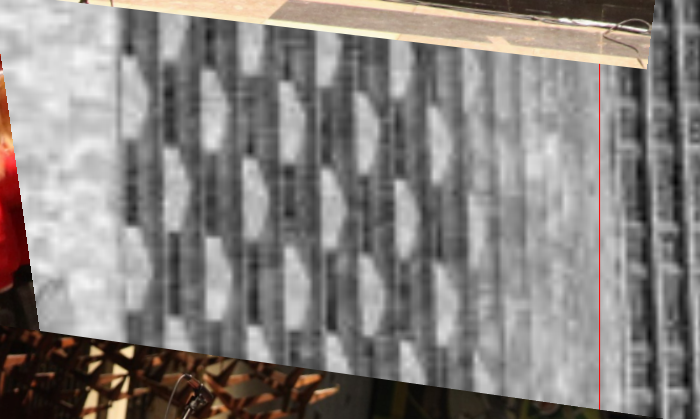
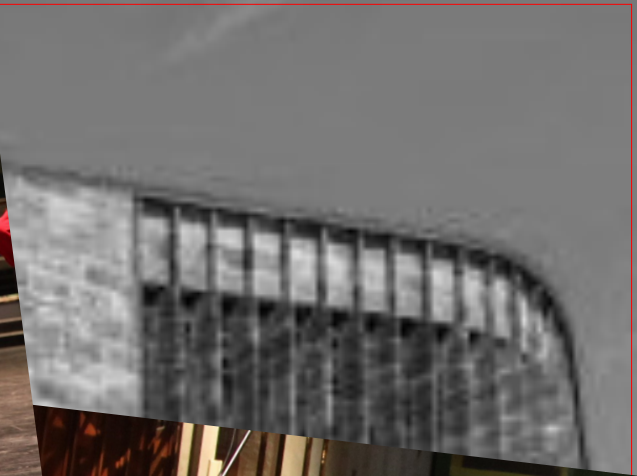
On Monday evening, a group of children from Leamington Hastings and Dunchurch Infants performed 'This Little Light Of Mine' as part of a Multi Academy Trust wide concert at Coventry Cathedral. The children performed beautifully, and were excellent ambassadors for the school throughout the afternoon and evening. Fifteen schools took part, and it was remarked upon that the infant children stole the show! We are very proud of everyone involved. If you would like to hear the children sing their song, an audio recording can be found on the school website [here](#). See the next page for some photographs from the evening.

On Monday, it is our annual Christingle service in school—please be aware that each child will bring home a Christingle on Monday. Everyone is welcome to join us at 2:30pm. The service will be lead by Karen Armbrister from All Saints, along with some songs sung by the children. We have been informed by the Parish Hall that there is a wake taking place in the hall on Monday from 12:30pm, so you may not be able to park in the car park if this is still taking place. Parking will be available on the road, and we will also open the gates to the school playground from 2pm. Please do feel free to park on the school playground, starting from the top of the playground by the grass and then working your way down. Please do note that parking on school site is at your own risk.

Thank you for your ongoing support. Have a lovely weekend!

Suzanne Marson  
Headteacher





## **PUPIL ACHIEVEMENTS THIS WEEK**

### **LEARNER OF THE WEEK**

**Eagle Owls: Zara**  
**Snowy Owls: Jacob, Theo**

### **LEARNING BEHAVIOUR OF THE WEEK**

**Eagle Owls: Georgia, Moriah**  
**Snowy Owls: Evie C, Benjamin**

### **5 READS RAFFLE TICKET:**

**Eagle Owls: Will, Zara, Emily, Georgia**  
**Snowy Owls: Benjamin, Jude, Evie, Evelyn, Sadie, Theo, Emile**

### **LUNCH TABLE OF THE WEEK**

**Green Table**

### **CAUGHT SHOWING VALUES**

**Courage: Lucas, Autumn, Leela, Connor**  
**Forgiveness: Sadie**  
**Generosity: Zara, Emily, Georgia, Sam, Micaiah, Emile, Connor x 2, James, Lilia, Jude x 2, Gregory x 2, Will, Aeryn x 2, Theo, Jacob, Evie, Alasdair x 2, Barney, Arthur, Matthew, Benjamin, Emily**  
**Friendship: Lilia, Edith**  
**Thankfulness: Sophia, Ashlyng**  
**Truthfulness:**

### **ACHIEVEMENTS FROM HOME:**

The achievements this week include gymnastics.



# Spotlight on .....

## Maths – concrete objects

At Leamington Hastings C of E Academy, we use the maths mastery approach to teach maths. As part of our maths teaching, we ensure that there are concrete objects (actual objects) available for children to use throughout their learning. These are also referred to as manipulatives. Concrete objects can range from the actual objects, for example if reception children are solving a problem about apples they may use apples to solve the problem, to mathematical equipment.

Some of the mathematical equipment we use in school can be seen below. Examples of how we use these are:

- A dice face to subitise (instantly recognise) arrangements to 6
- Cubes to measure, count and represent calculations
- Counters to count, add, subtract and represent numbers, including in fives and tens frames, and in part whole models
- Place value counters, straws and base ten equipment to represent the number of tens and ones in a number, or to support with calculations
- Bead strings and rekenreks to count and solve problems involving number bonds
- Numicon to recognise numbers and to represent the number of tens and ones in a number
- Part whole and bar models, using concrete equipment to represent calculations within them



We might use the same equipment to represent numbers in different ways. For example, the number 29 could be represented in different ways as per the image below:

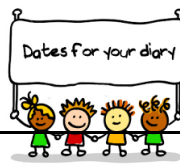
Base 10

Place value counters

Place value chart

Tens	Ones

29



Any new dates will be added in red

Monday 2nd De- cember	<b>Christingle service</b> Parents are welcome into school to join the children for a Christingle service. This will be lead by Karen Armbrister from the local church. Please arrive in school for a 2:30pm start.
Monday 2nd De- cember	<b>Christmas wreath making evening</b> 7pm at Grandborough Village Hall. Hosted by Leamington Hastings School PTA. All proceeds will go towards new school equipment.
Friday 6th December	<b>Non uniform day</b> Children are invited to wear non-uniform to school in exchange for chocolate and bottles towards the Christmas fair tombola stalls.
Thursday 12th De- cember	<b>All things Christmas!</b> Children are welcome to come into school wearing non-uniform, including a Christmas jumper, for Save the Children Christmas Jumper Day. Any voluntary donations are welcome. Children will take part in a Christmas craft day on this day.
Monday 16th De- cember	<b>Christmas play 1</b> The children across school will perform their Christmas play at 2:30pm. Each family will receive two tickets for the play. Please do ensure that you bring these with you to each performance.
Tuesday 17th De- cember	<b>Children play 2</b> The children across school will perform their Christmas play at 9:15am. Each family will receive two tickets for the play. Please do ensure that you bring these with you to each performance.
Tuesday 17th De- cember	<b>Theatre trip to Warwick Arts Centre—The Smeds and The Smoos</b> Please see the letter sent home.
Thursday 19th De- cember	<b>Special visitor</b> The children will receive a very special visitor in school.
Thursday 19th De- cember	<b>Christmas church service</b> Parents and wider family members are welcome to join us for a church service at All Saints Church, Leamington Hastings. The service will start at approximately 9:45am and will be lead by Reverend Phil.
Thursday 19th De- cember	<b>Passport to world views afternoon</b> Children will be learning about the festival of Hannukah in school.
Thursday 19th De- cember	<b>Christmas Fair</b> Join us for a Christmas Fair in the school hall, 3:15pm—5pm. Any donations of cake to be sold at the fair are welcome to be brought into school on the day.
Sunday 29th De-	<b>Quiz Night</b> The Dun Cow are holding a quiz night—all are welcome. Some proceeds from the event will be donated towards Leamington Hastings.

**MOMENTS MATTER, ATTENDANCE COUNTS.** #AttendanceCounts

**DID YOU KNOW?**

Being just 10 minutes late each day equates to 30 hours of lost learning each year...

5 MINUTES LATE 3 DAYS LOST 15 HOURS OF LEARNING LOST	10 MINUTES LATE 6 DAYS LOST 30 HOURS OF LEARNING LOST	15 MINUTES LATE 10 DAYS LOST 45 HOURS OF LEARNING LOST	20 MINUTES LATE 13 DAYS LOST 60 HOURS OF LEARNING LOST	30 MINUTES LATE 19 DAYS LOST 90 HOURS OF LEARNING LOST
--	---	--	--	--

## Attendance Weekly Summary

Whole school: 92.1% (Target 97%)

Reception	Year 1	Year 2
98%	86%	90%

## PE Days

Children should wear their P.E. kits to school on the following days:



Monday	Tuesday	Wednesday	Thursday	Friday
Early Years KS1	-	-	-	Early Years KS1

## After School Clubs: Autumn term 2

Monday	Tuesday	Wednesday	Thursday	Friday
Construction Club	Archery	Cookery Xmas Craft Club	Cheerleading Pottery	Football



## BOOK OF THE WEEK

**Title:** Spring

**Author:** Claire Llewellyn

**Recommended by:** Alasdair

Alasdair recommended a non fiction book which covers the topic Spring.

He was able to use his skills to find information within the book.



Click on [Family Information Service](#) for a wide range of information to support families. Please [click](#) for the special edition.



Warwickshire Local Authority SEND newsletter can be found here. [Click link](#)



Newsletter link please click [here](#).

Created by Connect for Health, your School Nursing Service.



## ONLINE SAFETY TIP OF THE WEEK



This week's top tip for parents to protect and keep children safe online.

Please find the [link](#) to online resources relating to online safety for under fives from Childnet.



## COLLECTIVE WORSHIP

In collective worship this week, we explored the Patron Saint of Scotland, St Andrew.

We also took part in a Posada, exploring the Christmas story through the eyes of the donkey who had a long journey to Bethlehem. The Posada will now continue its journey onto Dunchurch Infants and then around the local families of Willoughby, before arriving at St Nicholas' Church on Christmas Eve.

## TERM DATES 2024/2025

### Autumn Term 2024

End of Term: 20th December

### Spring Term 2025

**Teacher Training Day Monday 6th January**

Half Term: Monday 17th Feb to Friday 21st Feb

**Teacher Training Day Monday 24th February**

Term Starts Tuesday 25th Feb

Term Ends Thursday 10th April

**Teacher Training Day Friday 11th April**

### Summer Term 2025

Term Starts Monday 28th April

Spring Bank Holiday: 5th May

Bank Holiday: 26th May

Half Term: Monday 26th May to Friday 30th May

End of Term Friday 18th July

**Disaggregated Teacher Training Day Monday  
21st July**

## CHRISTIAN VALUE



## LEARNING BEHAVIOUR

### Wise Owl



- \* I can use the resources on my table and in the classroom to help me.
- \*\* I can use the working wall, phonics mats and knowledge organisers to find information to help me.
- \*\*\* I use things I already know to make links and help me learn new information.

**CHRISTMAS WREATH MAKING EVENING**

ALL MATERIALS & DECORATIONS SUPPLIED

£30 - Includes Mulled wine & nibbles  
(Cash Payable on night)

**MONDAY | 2ND DEC | AT 7 PM**

Grandborough Village Hall

Spaces available from Hannah Mawby - 07738 147195

Hosted by Leamington Hastings School PTA. All proceeds will go towards new school equipment

The Directors of the Diocese of Coventry Multi Academy Trust are currently determining proposed admission arrangements for admissions to its academies in September 2026. As determined by the School Admissions Code, we are required to consult on these arrangements at least once every 7 years or when significant changes are made, and are inviting comments on the proposed changes.

A copy of the covering letter and proposed admissions policy is available on our website at <https://www.covmat.org/multi-academy-trust-policies/> for your information. Alternatively if you require a hard copy of the policy please email [info@covmat.org](mailto:info@covmat.org) to request. Whilst this is a trust wide policy, the individual school admissions arrangements are included as Appendix 1.

If you wish to comment on the proposed admissions arrangements, please send your response in writing for the attention of Louise Beale, either by post to the address at the bottom of this notice or by email to [info@covmat.org](mailto:info@covmat.org). Comments should be received by no later than 9am on Wednesday 18<sup>th</sup> December 2024.

The Diocese of Coventry Multi Academy Trust  
c/o St James CofE Academy, Barbridge Road, Bulkington, Bedworth, CV12 9PF

**MHST**  
Mental Health in Schools Team

**Tips For Wellness**

**Thoughtful**

Being thoughtful is when we think about not only our needs and feelings, but also the needs and feelings of other people. There are lots of ways we can brighten up someone else's day by being thoughtful. Small things, such as being kind and helpful, can really make a positive impact on those around us. Thoughtfulness can spread happiness and help to encourage positive thinking.

Try to reflect on as many times as you can when people have been thoughtful towards you over the past week. There will have been more times than you think! How did it make you feel? Is there a way you could be thoughtful towards these people over the next week?

**Our tips for being thoughtful:**

1. Say 'hello' to a friend or teacher.
2. Ask a friend or teacher if you can help them.
3. If somebody needs a friend, be there to listen.
4. Do something kind for somebody else.
5. Think about other people and what they would like or need.
6. Smile at others to make them feel happy and relaxed.
7. Do something considerate for others, such as offering to help.
8. Speak kind or comforting words.
9. Show the person who is speaking to you that you are really interested by asking questions and listening carefully to the answers.
10. Hold the door open for the person behind you.
11. Give someone a compliment.
12. Listen to other people's ideas and thoughts.
13. If you see someone struggling, ask if you can do anything to help them.
14. Tidy up after yourself, both at home and at school!

In Coventry and Warwickshire, for any urgent mental health concerns, contact the RISE Crisis Helpline available 24/7, by calling NHS 111. Alternatively, call 999 or visit A&E in an emergency, for example if medical attention is required.

MHST are available to support you and your school throughout the school year including term time and school holidays.

Please contact your school's Mental Health Lead for information and advice.

**THE APPLICATIONS PROCESS FOR RECEPTION AND JUNIOR SCHOOL** Year 3 placements opens on 1 November 2024 and the deadline for applying for a Reception or Junior place is **15 January 2025**. If you apply by this date, you will receive your child's school offer on National Offer Day (16 April 2025).

Applications made after this date will be classified as late and not considered until after **16 April 2025**, by which time many schools will be full and you are much less likely to be offered a place at your preferred school.

[Click here for the link to Warwickshire County Council's website to apply direct.](#)

- 1 November** Application opens
- 15 January** Closing date for applications
- 1 February** Extended closing date for house choices
- 16 April** National offer day
- 2 June** Deadline for submitting appeals

**2024 Christmas Services**  
In the Draycote and Leam Valley Benefice

For unto us a child is born!

24.12.2024 - 8am - All Saints, Stretton-on-Dunsmore - Christmas Service  
14.12.2024 - 4pm - St Marks, Flecknoe - Family Carol Service  
8.12.2024 - 8am - St Nicholas, Wilsington - Christmas Service  
8.12.2024 - 8.30pm - Sandon Farm, Birdingbury - Living Crib  
15.12.2024 - 4pm - St Nicholas, Wilsington - Family Carol Service  
15.12.2024 - 4pm - St Nicholas, Frankton - Family Carol Service  
15.12.2024 - 6pm - All Saints, Stretton-on-Dunsmore - Carols by Candlelight  
20.12.2024 - 6pm - St Peter's, Barton-on-Dunsmore - Carols by Candlelight  
21.12.2024 - 6pm - Birdingbury Club, Community Carols  
22.12.2024 - 4pm - All Saints, Leamington Hastings - Family Carol Service  
Christmas Eve - 4pm - All Saints, Stretton-on-Dunsmore - Crib Service  
Christmas Eve - 6pm - St Peter's, Barton-on-Dunsmore - Carols by Candlelight  
Christmas Eve - 9.30pm - All Saints, Leamington Hastings - Bethlehem Communion  
Christmas Day - 8am - St Nicholas, Frankton - BCP Communion  
Christmas Day - 10.15am - All Saints, Stretton-on-Dunsmore - Christmas Communion  
Christmas Day - 10.15am - St Leonards, Birdingbury - Christmas Day Allsorts

[www.draycoteandleamvalleybenefice.com](http://www.draycoteandleamvalleybenefice.com)

**RUGBY WINTER HOLIDAY**  
ACTIVITY CAMPS

30<sup>th</sup>, 31<sup>st</sup> DECEMBER & 2<sup>nd</sup>, 3<sup>rd</sup> JANUARY

**RUGBY FREE PRIMARY SCHOOL**  
DAILY HOUSING PROVIDED - CV12 9PF

**AGES 6-12**

**ONLY £15 A DAY**

**GAME-ON!**

**OFFICIAL OF THE H&F**

**TIMES & PRICES:**  
FULL DAY - 9.15am - 3.15pm £15 PER DAY  
EARLY START - 8.15am - 12.15pm £10 PER DAY  
LATE START - 1.15pm - 4.15pm £2.50 PER DAY  
HALF PRICES AVAILABLE - RISE CHILDREN FRIENDLY - 9.15am - 3.15pm  
BOOK NOW PLEASE CONTACT: [leamingtonacademy@leamingtonschools.co.uk](mailto:leamingtonacademy@leamingtonschools.co.uk) OR ON 01927 200 200  
BOOK DIRECTLY CONTACT: [mel.bailey@leamingtonacademy.co.uk](mailto:mel.bailey@leamingtonacademy.co.uk) - 01927 200 200

Leamington Hastings Academy Parents Group

Please find the link to the Friends of Leamington Hastings parents group.

Please contact Mel Bailey if you have any questions.

<https://www.facebook.com/groups/284583758358057/>

**YOUR LOCAL AIR AMBULANCE**

**CHRISTMAS CAROL SERVICE**

13th December 2024, at St Andrew's Church, Rugby

STALLS | REFRESHMENTS | MUSIC

SEARCH UNDER NEWS FREE  
SCAN FOR YOUR TICKETS

OR CALL - 0300 3045 999

Let their memory fly!

**allsorts**  
rugby for parents and children

Please click on the link for the latest information from Allsorts.

[Allsorts Rugby](#)  
Nov / Dec 2024



**Warwickshire County Council  
In-Year Admissions Process  
2026/2027 Academic Year**

**1 Background**

- 1.1 In-year applications are those when a parent or carer wants their child to change schools during the school year, perhaps because of a house move or other change in personal circumstances. They are applications that fall outside the standard Coordinated Scheme and will follow the process outlined in this document.
- 1.2 Warwickshire County Council coordinates the in-year applications for all community and voluntary controlled schools, and the majority of own admission authority schools, such as academies, free schools, foundation and voluntary aided schools. The full list and contact details of schools that manage their own in-year applications can be found on the [Warwickshire Admissions webpages](#).
- 1.3 All processes set out for In-year school admissions will be undertaken in line with the School Admissions Code (2021).
- 1.4 The document sets out the processes for the In-year change of school applications during the 2026/27 academic year. Further details on school admission and how to apply is available online at [www.warwickshire.gov.uk/admissions](http://www.warwickshire.gov.uk/admissions)
- 1.5 Details of which schools are local to the applicant's home address can be found online using the Warwickshire [Nearest/Priority Area School Calculator](#). Parents can find a list of schools and whether they have vacancies or waiting lists by visiting [Warwickshire Schools Vacancy List](#)
- 1.6 Non-Warwickshire residents should, in the first instance, contact the local authority in which they live to establish the in-year admissions process in relation to their home authority.
- 1.7 Applications to start school in reception or transfer to a junior or secondary school in September 2026 must be made in line with the WCC Coordinated Scheme for admission to school in September 2026.



**Warwickshire County Council  
Admission Arrangements 2026/27  
for Community and Voluntary Controlled Schools**

Warwickshire County Council is the Admissions Authority for all community and voluntary controlled schools within Warwickshire.

These admission arrangements should be read in conjunction with the Warwickshire coordinated scheme for admission to school in 2026.

A separate application must be made for any transfer from nursery to primary school, and from infant to junior school.

Offers for the 2026 entry year will be made up to each school's Published Admission Number (PAN) as outlined in this document.

If the number of applications for any school is less than the published admission number, then all applicants will be offered a place.

The Admissions Service may request additional evidence to determine a child's eligibility within the oversubscription criteria.

Warwickshire County Council's relevant area for consultation is contained within the administrative area of Warwickshire County Council.

When a Warwickshire Community or Voluntary Controlled School is over-subscribed, after the admission of pupils with an Education, Health and Care plan naming the school, priority for admission will be given to those children who meet the criteria set out below, in priority order.



**Coordinated Scheme for admission to school in  
September 2026.**

**1. Background**

- 1.1. All local authorities are required to have in place a scheme for coordinating admission arrangements for maintained schools and other mainstream state-funded schools (e.g. academies) within their area.
- 1.2. Warwickshire School Admissions Service will co-ordinate all applications made during the normal admissions rounds (i.e. applications for Reception Year, Year 3 at a Junior School and Year 7)
- 1.3. The scheme sets out general principles and processes for the 2026 main admissions rounds. Further details on school admission and how to apply is available online at [www.warwickshire.gov.uk/admissions](http://www.warwickshire.gov.uk/admissions)
- 1.4. All processes set out in this scheme will be undertaken in line with the School Admissions Code (2021).
- 1.5. The scheme relates to children who are due to start school in reception, transfer from an infant to a junior school, or transfer from primary provision to a secondary school in September 2026
- 1.6. Under the system of coordinated admissions, parents apply directly to their home authority and make a single application for a school place. Parents will then receive a single offer of a school place from their home authority.
- 1.7. The aim of the coordinated process is to ensure each child for whom an on-time application is received, receives the offer of only one school place. The scheme is intended to simplify the admission process and reduce any chance that a child is left without a school place.
- 1.8. Independent (fee-paying) schools are not part of the coordinated scheme. These schools will have their own admission process and parents should contact the relevant school directly if they wish to apply for a place at an independent school.



**Warwickshire County Council  
Consultation for 2026/2027 School/Admission Arrangements**

**Included:**

- 2026 Entry Coordinated Scheme
- 2026/27 Admission Arrangements for voluntary controlled and community schools in Warwickshire
- 2026/27 Coordinated in-year process

**Consultation and coordination**

Warwickshire County Council is the admission authority for all community and voluntary controlled schools within Warwickshire. As the admission authority, Warwickshire County Council is required to set the admission arrangements for its schools that clearly sets out how children will be admitted, including the criteria that will be applied if there are more applications than places.

The local authority is also required to formulate and publish a scheme to coordinate admission arrangements for the normal admissions round, and late applications, for all publicly funded schools within the area. The scheme enables Warwickshire residents to make a single application for places at their preferred state funded school(s) regardless of whether it is in the local authority area in which they live. Offers are sent by the home local authority ensuring each child, for whom an application has been received, receives the offer of only one school place. This may not be at one of the schools listed as a preference if there are more applications than places available.

The local authority also coordinates the in-year applications for the majority of schools in the area. The local authority is required to publish the process for making in-year applications and how these will be dealt with.

Warwickshire County Council is undertaking a consultation relating to the admission arrangements for the 2026/27 academic year. As required by the School Admissions Code (2021), admission authorities must consult on their proposed admissions arrangements for 2026 entry for a minimum of 6 weeks between 01 October 2024 and 31 January 2025.

The consultation period for Warwickshire County Council's proposed admission arrangements for 2026/27 academic year, will therefore operate between:

**00:00 on Monday 25 November 2024  
until  
23:59 on Sunday 19 January 2025**