



Leamington Hastings C of E Academy

Plant, Grow, Flourish!

Newsletter number: 33

Date: 05.06.2026



Welcome back to school after the half-term break! It has been great to see everyone back and hear all about your holidays. We hope everyone was able to make the most of the lovely sunshine last week and enjoyed some quality time together. We are looking forward to another exciting and busy half term ahead! The children have made a great start this week, settling quickly back into school and getting stuck in with their learning.



On Monday, as part of our training day, staff spent time working together on our school vision and taking part in professional training. These opportunities allow us to reflect on our values, strengthen our practice, and continue to ensure we provide the very best experiences and opportunities for all of our children. As a reminder, our vision is our spotlight this week.



Yesterday, the Friends met to plan Rose Queen day, and it is shaping up to be a lovely day for everyone involved. A huge thank you to all those who continue to give their time and support to make these events possible. We hope as many families as possible are able to attend and join us for what promises to be a fantastic community event. Please do see the diary dates for further information.

Have a lovely weekend. Thank you for your ongoing support.

Suzanne Marson

Headteacher



Pupil achievements this week

Learner of the week

Eagle Owls (EYFS):	Arnie	Snowy Owls (KS1):	Jude
--------------------	-------	-------------------	------

Learning behaviour of the week (based on the half termly learning behaviour focus)

Eagle Owls (EYFS):	Ruben, Lucas	Snowy Owls (KS1):	Ava
--------------------	--------------	-------------------	-----

Five reads raffle tickets

Eagle Owls (EYFS):	Millie, Lara, James, Joseph, Charlie, Isaac, Ella, Lucas, Arnie, Autumn, Sophia O, Sophia L, Benjamin	Snowy Owls (KS1):	Ava, Zara, Benjamin
--------------------	---	-------------------	---------------------

Caught showing values slips

Courage:	Finlay, Autumn, Isla, Zara, Benjamin Rec, Charlie, Archie, Isaac, Sam, Jacob, Jude	Generosity:	Zara, James, Lucas, Ms Cuddihy, Leo, Matteo, Joseph, Max, Isla Rec	Truthfulness:	Oscar
Friendship:	Sophia L, Arnie, Jack, Corrin, Millie, Georgia, Logan Y2, Edith	Forgiveness:	Freddie, Eagle Owls	Thankfulness:	Will, Benjamin Y2, Sophia O, Ella, Lara, Ruben, Ava, Emily

Home Achievement

This week the achievements include horse riding and gymnastics.

Diary Dates

Any new dates will be added in red

8 th – 12 th June	Phonics screening check Children in year one and some children in year two will be taking part in the national phonics screening check.
8 th – 19 th June	Year 2 Assessments Year two assessments will be taking place over the course of these two weeks.
Wednesday 10 th June	Key Stage One trip to Coventry Cathedral KS1 pupils will be visiting Coventry Cathedral for the day. Please see the letter sent home for full details. Please arrange to make payment via MCAS app by 1st June this will act as consent for your child to attend the trip.
Friday 12 th June	Pyjamarama A day to promote a love of reading and bedtime stories with the children. Children are invited to come into school wearing pyjamas or comfy clothing for the day. Children are invited to bring their favourite bedtime story to school to share with a friend, and a voluntary donation of £1 to support the work of the Booktrust who provide books for disadvantaged children is welcome, should you wish to do so.
Friday 12 th June	Ice cream / ice lolly sale Friends will be selling ice creams / lollies on the playground after school.
15 th – 21 st June	Sports week All children will take part in a daily mile this week. (Usual arrangements for school uniform / PE kit days please)
Tuesday 16 th June	Sports afternoon (all year groups) Parents are invited to join us for a sports afternoon from 2pm to see the children take part in a carousel of sports activities, followed by some sports day activities. If you would like to sit down, please bring a blanket or chair. When taking part in sport's day activities, parents will be on the playground facing the grass, with the children on the grassy area. All children to come to school in PE kits on this day. Refreshments will be available from Friends – cash only please.
Thursday 18 th June	Father's Day service We would like to invite Dad's, or a male representative, to come into school to join in with a Father's Day service. Only one representative per family please. Please arrive for a 2:30pm start via the School Office entrance. Refreshments will be available from Friends – cash only please.
Thursday 18 th June	Information evening for new reception parents

	If your child is due to start reception in September 2026, you are invited to join us for an information session from 5pm to see the classroom and find out about starting school.
Friday 19 th June	Father's Day gift bags Friends will be selling Father's Day gift bags. More information will follow.
Saturday 20 th June	Willougby Church Festival The children have been invited to dance around the maypole as part of the festival. Please come to St Nicholas' Church for 2pm ready to start the dances at 2:15pm. Please can any children attending wear school uniform for the dancing.
Monday 22 nd June	World Music Day Children are invited to come into school dressed as their favourite rock star or musician as part of developing a love of music.
Tuesday 23 rd June	Reserve sports afternoon A reserve slot in case we have to postpone sports afternoon on the 16 th due to the weather
Thursday 25 th June	Transition visit, new to reception children A transition visit from 4pm – 5:30pm for children and parents who are new to our school and will be joining reception in September 2026.
Friday 26 th June	Non uniform day Children are invited to come to school in non-uniform in exchange for bottles, chocolates or sweets to be used in the tombola during Rose Queen Day.
Thursday 2 nd July	Year 2 to spend the day at the Juniors (those moving to Juniors in September 2026) Children will be taken to spend a day at the Juniors as part of transition. This will include a teddy bear's picnic and a sports afternoon - school will provide a picnic lunch. Children are invited to bring a named teddy bear into school with them. All children to wear PE kits on this day please. Please can the children arrive at 8:30am. The children will travel to the Junior School on the blue school bus, accompanied by a school adult. The bus will then collect the children from the Junior School towards the end of the day and bring them back to Leamington Hastings.
Sunday 5 th July	Rose Queen Day Our traditional summer fair will take place on this date, with the children opening the fair with maypole dancing. We would like to invite all children and families to attend. Please can the children wear their school uniform and arrive at school at 11:15am. The children will come into school with school adults to get ready and begin dancing at 11:30am. The fair will then start following the dancing. Any donations of cakes to be sold on the cake stall on the day would be welcome. The raffle will be drawn at 12:30pm. Please do not park in the Village Hall or on the road on this day. The field opposite the school will be opened up for parents to park on and

	will be clearly signposted.
Monday 6 th July	EYFS Sea Life Centre Trip EYFS pupils will be visiting the Sea Life Centre for the day. Please see the letter sent home for full details. Please arrange to make payment via MCAS app by 26th June this will act as consent for your child to attend the trip.
Wednesday 8 th July	Country Transfer Day Children will be spending time in their new classes. If your child is in year 2, they should spend the day at their new school (for children moving to Dunchurch Juniors, please take them directly to the Juniors on this day). If your child is due to start reception in September 2026, they are invited to join us for the morning and lunchtime session (see the letter sent home). All other children should attend school as normal.
Friday 10 th July	National Teddy Bear's Picnic raising money for Birmingham Children's Hospital Children are invited to bring a named teddy bear into school for a picnic lunch, along with a donation towards Birmingham Children's Hospital. We have families in school who have been supported by Birmingham Children's Hospital and would like to raise as much money as we can for this worthy cause.
Monday 13 th July	Reports home to parents An end of year report for each child will be emailed home by the end of the day today.
Tuesday 14 th July	End of year performance 1 Parents are invited to come into school to see the children take part in a leaver's performance in the school hall at 2:15pm. Two tickets will be available per child across the two performances (the tickets will be sent home from the school office nearer the time). Please enter and leave via the School Office.
Tuesday 14 th July	Open evening Parents are invited to come into school with their children to view their children's work and to visit classrooms from 3:30pm—5pm. Class teachers will be available to speak to about reports if you would like to.
Wednesday 15 th July	End of year performance 2 Parents are invited to come into school to see the children take part in a leaver's performance in the school hall at 9:15am. Two tickets will be available per child across the two performances (the tickets will be sent home from the school office nearer the time). Please enter and leave via the School Office.
Wednesday 15 th July	Year 3 classrooms open at Dunchurch Juniors If your child is moving into year 3 at Dunchurch Juniors in September, the classrooms will be open from 3:30pm – 4:30pm for you to view if you would like to.

Thursday 16th
July

End of year church service

All parents are welcome to join us in All Saints Church for an end of year church service to start at approximately 1:45pm.

We will be walking to church through the fields, please send your children to school with appropriate footwear on this day. We would be grateful for any parent volunteers to help us to walk the children to and from church - please let the school office know if you are able to help.



 Rugby Borough Children and Family Centres (CFC) Summer Term Timetable 1 st June -17 th July 2026 					 Changing children's Changing lives.
Monday	Tuesday	Wednesday	Thursday	Friday	
Walk-in Wardrobe & Toy Library Pre-loved clothes for 0-5 years 10.00am to 11.30am Clarendon CFC	Toddler Time Drop-in, no booking Aimed at 0-5 years 10.00am to 11.30am Boughton Leigh CFC	Little Stars For children with SEND 10.00am to 11.00am Clarendon CFC	Baby REAL 6 weeks - 18 months Booking essential* 9.30am to 11:00am Boughton Leigh CFC Starting 18th June 2026	Toddler Time Aimed at 0-5 years 10.00am to 11.00am Rogers Hall (CV21 4EN)	
Baby Self Weigh Come and weigh your own baby 9.30am to 12.00pm Clarendon CFC	Baby Massage Booking essential* 10.00am to 11.00am REC @ Woodlands CV22 6JZ Starting 2 nd June 2026	Baby Massage Booking essential* 10.00am to 11.00am Welston Village Hall (CV8 3HJ) Starting 3 rd June 2026	Toddler Time Maximum capacity 20 families Aimed at 0-5 years 10.00am to 11.30am Clarendon CFC	Baby Self Weigh Come and weigh your own baby 9.30-11.00 Boughton Leigh CFC	
Baby Time Non-walkers from birth 10.00am to 11.00 am Clarendon CFC	Baby Time Non-walkers from birth 10.00am to 11.00am The Barn @ Houlton (CV23 1AL)	Walk-in Wardrobe Pre-loved clothes for 0-5's 12.00pm to 2.00pm Clarendon CFC	Twinkle Time For those standing, cruising round furniture and just starting to walk 1.30pm to 2.30pm Clarendon CFC	All blue boxes are booking-required groups. If you are interested in attending please contact any of our centres via telephone or email	
Toddler Time Drop-in, no booking Aimed at 0-5 years 10.00am to 11.30am Long Lawford CFC	Number Explorers Aimed at 20 months - 4yrs Booking essential* 1.00pm to 2.15pm Clarendon CFC Starting 16th June 2026	Baby & Toddler Time Non-walkers to 5yrs 1.45pm to 2.45pm Cawston Community Hall (CV22 7GU)	Baby Chatter Matters Booking essential* 1.30pm to 2.30pm Hill Street Youth & Community Centre (CV21 2NB) Starting 13th June 2026	Visit our website! To view our sessions on our website please scan the QR code below 	
Family ESOL Stay and Play Aimed at 20mths to 4yrs 1.00pm to 2.00pm Clarendon CFC	Sensory Time STARTING 9th JUNE Aimed at those standing & just walking to 5 years 1.30pm to 2.30pm The Barn @ Houlton (CV23 1AL)	Toddler Chatter Matters Booking essential* 1.30pm to 2.30pm Clarendon CFC Starting 3 rd June 2026	Saturday		
Baby Time Non-walkers from birth 1.30pm to 2.30pm Long Lawford CFC	Baby Time Non-walkers from birth 1.30pm to 2.30pm Boughton Leigh CFC	AK Coaching For 5 - 11 yrs Booking essential* 3-45pm to 4.45pm Not running on 15th July Clarendon CFC	Expressive Arts For 5 - 11yrs Booking essential* 3-45pm to 4.45pm Clarendon CFC	Saturday Saturday Stay and Play session for Dads and male carers 2 nd Saturday of the month 10.00am to 11.30am Monthly dates: 13th June 2026 11 th July 2026 Clarendon CFC	

Current Lunch Menu



SPRING SUMMER MENU 2026



	Planet Friendly MONDAY	TUESDAY	WEDNESDAY	THURSDAY	FRIDAY	MEN KEY
WEEK ONE 13/04/26 04/05/26 25/05/26 15/06/26 06/07/26	Option One Chef's Special Creamy Chickpea Curry with Rice (VE)	Mild Mexican Chili with Rice (VE)	Roasted Quorn, Roast Potatoes, & Gravy (VE)	Smokey Bean Burger with Wedges & Tomato Sauce (VE)	Cheese & Bean Pasty with Chips & Tomato Sauce (V)	Whole grain Plant based Add plant protein Chef Special
	Option Two Classic Macaroni Cheese (V)	Phat Pasty Pork Sausage Roll with Potato Wedges	Roast Chicken, Stuffing, Roast Potatoes & Gravy	Spaghetti Bolognese	Fishfingers or Salmon Fishfingers with Chips & Tomato Sauce	
	Sides: Vegetables of the Day	Vegetables of the Day	Vegetables of the Day	Vegetables of the Day	Vegetables of the Day	
WEEK TWO 20/04/26 11/05/26 01/06/26 22/06/26 13/07/26	Dessert NEW Banana Mousse (V)	Orange Drizzle Cake (V)	Fruit Platter (VE)	Apple Flapjack (VE)	Strawberry Jelly with Mandarins (VE)	
	Option One Lentil & Sweet Potato Curry with Rice (VE)	Spaghetti & Planet Friendly Tomato Saucy Meatballs (VE)	Lentil Wellington, Roast Potatoes & Gravy (VE)	Greek Spinach & Cheese Whirl with Herby Rice, Tzatziki & Salad (V)	NEW Cheesy Broccoli Frittata with Chips (V)	
	Option Two Cheese & Tomato Pizza with Summer Mixed Salad (V)	Beef Chili with Rice & Sweetcorn & Cucumber Salsa	Roasted Pork or Chicken Sausage, Roast Potatoes & Gravy	Greek Chicken Pitta with Herby Rice, Tzatziki & Salad	Battered Fish with Chips & Tomato Sauce	
WEEK THREE 27/04/26 18/05/26 08/06/26 29/05/26 20/07/26	Sides: Vegetables of the Day	Vegetables of the Day	Vegetables of the Day	Vegetables of the Day	Vegetables of the Day	
	Dessert Iced Vanilla Sponge (V)	Peaches & Ice Cream (V)	Freshly Chopped Fruit Salad (VE)	Jam & Coconut Sponge with Custard (V)	Oaty Cookie (VE)	
	Option One Saucy Tomato Pasta (VE)	Mexican Bean Roll with New Potatoes & Rainbow Slaw (VE)	Hearty Garden Loaf with Stuffing, Mashed Potatoes & Gravy (VE)	All Day Planet Friendly Breakfast (V)	Nature Ranger Sausage and Bean Hotpot (VE)	
Option Two NEW Chinese-Style Rainbow Noodles (V)	Beef Burger with Potato Wedges & Rainbow Slaw	Roast of the Day, Mashed Potatoes & Gravy	Chef Shipa's Chicken Korma with Rice	Fishfingers with Chips & Tomato Sauce		
Sides: Vegetables of the Day	Vegetables of the Day	Vegetables of the Day	Vegetables of the Day	Vegetables of the Day		
Dessert Pineapple Upside Down Cake (V)	Cheese & Crackers (V)	Fruit Medley (VE)	Strawberry and Apple Crumble with Custard (V)	Vanilla Shortbread (VE)		

AVAILABLE DAILY: Jacket Potatoes with a choice of fillings, Salad Bar, Bread, Fruit.

ST NICHOLAS WILLOUGHBY CHURCH FETE
 Incorporating **FAMILY DOG SHOW**
 with Judge Tom Waterworth, from Bilton Veterinary Centre

Maypole Dancing, Strawberry teas, Raffle, Dog themed face painting and lots of fun fete games. *Cash only on the day please*

SATURDAY JUNE 20TH
2PM

Fun dog show with 8 Classes to enter
 HANSMEST DOG * PRETTIEST BITCH * BEST BOW TIE OR HAT * SCRUFFIEST MUTT * WAGGIEST TAIL * BEST SIX LEGS (OWNERS INCLUDED) * QUICKEST SIT * ENTRY THE JUDGE WOULD MOST LIKE TO TAKE HOME * ACCUMULATOR FOR BEST IN SHOW
 Entries £2 per class on the day in cash please

www.dragonandleanvalleybenefice.com

IT'S ICE LOLLY TIME
 RAISING FUNDS FOR SCHOOL RESOURCES

£2 EACH

FRIDAY 12TH JUNE 2026

On the playground After school

SPORTS DAY REFRESHMENTS
TUESDAY 16TH JUNE 2026
 REFRESHMENTS AVAILABLE DURING SPORTS DAY!
 CASH ONLY DONATIONS PLEASE
 ALL PROCEEDS TO FUND SCHOOL RESOURCES

FATHER'S DAY GIFT BAGS

Order the special men in your child's life a Father's Day gift, personalised by them in school

(Includes Drink Bottle, print, keychain etc)

Bags cost £6 each (order as many as you wish) All proceeds will go towards school resources

scan to order your bags by 8th June 2025

LEAMINGTON HASTINGS NON-UNIFORM DAY
FRIDAY 26TH JUNE 2026

IN EXCHANGE FOR ROSE QUEEN PRIZES
 SWEETS, CHOCOLATES, BOTTLES ETC

KEEP AN EYE OUT FOR MORE ROSE QUEEN DETAILS FOLLOWING SOON!

LEAMINGTON HASTINGS SCHOOL

Rose Queen Day

SUMMER FAYRE

5TH JULY 2026

DANCING STARTS AT 11:30

More details to follow!

all sorts 16 0-72
 for parents and children

https://bit.ly/ALLSORTS-MAG_MAYJULY

Spotlight on

Leamington Hastings C of E Academy Christian vision

As part of the Diocese of Coventry Multi Academy Trust, we have a shared vision of 'Together, living life in all its fullness' (John 10.10).

Linked to this, we have an individual school vision of:

Plant, Grow, Flourish

Our theologically rooted vision is based on the Parable of the Sower, taken from the Gospel of Matthew, reflecting our local farming community.

Jesus told his followers the Parable of the Sower:

- A farmer sows some seed in a field
- Some seed falls onto the path, and the birds quickly eat it.
- Some seed falls where there are rocks, and not much soil. Plants grow quickly but soon the sun dries them. There is not enough soil, and the plants die.
- Some seeds begin to grow in a place where there are too many weeds. The weeds stop the growth of the plants, and the plants die.
- But other seed falls on rich soil and receives everything they need, so the plants grow and flourish.

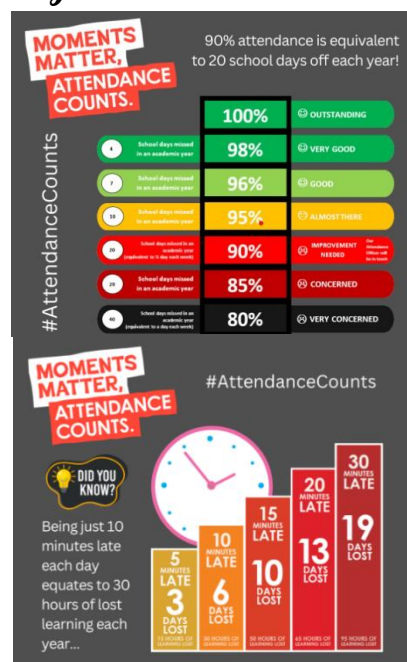
The meaning of the parable can be interpreted as below:

- The seeds are the teachings of academic learning, values, learning behaviours, extra-curricular trip and visitors, character and personal development and, for Christians and those of faith, the word of God.
- If we are not open to new learning and experiences, the seeds may be picked up by the birds and carried away.
- We may be inspired to try something new or to make a difference in the world, but without courage and perseverance we give up. The ideas wither away like the plants that grew on the rocks.
- We may be distracted or influenced by things we shouldn't be e.g., the temptation to make the wrong choice. These choices may stop future growth, as in the example of the weeds.
- The adults, as farmers, tend to the seeds to enable them to grow and flourish, guiding the children through their school journey.
- The seeds that fall on the rich soil are those that are listened to and taken on board, leading to application of taught skills and values. These help us to grow and flourish into all that we can be.

Attendance Weekly Summary

Whole School: 95.26 % (Target 97%)

		
Reception	Year 1	Year 2
93%	100%	91%



PE Days

Children should wear their P.E. kits to school on the following days. On other days, normal school uniform should be worn.



Monday	Tuesday	Wednesday	Thursday	Friday
Reception KS1				Reception KS1

After-School Clubs

Monday	Tuesday	Wednesday	Thursday	Friday
Arts & Crafts	Gardening Club	Multi Sport	Football	Active Games

To book a place in an after-school club, please book via the MCAS app.

Term Dates

Academic Year 2025/2026

Spring term 2026

End of term: Friday 27th March

Easter holiday: Monday 30th March to Friday 10th April

Summer term 2026

Start of term: Monday 13th April

Bank holiday: Monday 4th May

Half term: Monday 25th to Friday 29th May

Training Day: Monday 1st June

End of term: Friday 17th July

Training Day (Disaggregated): Monday 20th July

Summer holiday: Tuesday 21st July to Monday 31st August

Academic Year 2026/2027

Autumn term 2026

Training days: Tuesday 1st September and Wednesday 2nd September

Term starts for children: Thursday 3rd September

Training day: Friday 23rd October

Half term: Monday 26th to Friday 30th October

End of term: Friday 18th December

Christmas holiday: Monday 21st December to Friday 1st January

Spring term 2027

Training day: Monday 4th January

Start of term for children: Tuesday 5th January

Half term: Monday 15th to Friday 19th February

Training day: Monday 22nd February

End of term: Thursday 25th March

Easter holiday: Friday 26th March to Friday 9th April

Summer term 2027

Start of term: Monday 12th April

Bank holiday: Monday 3rd May

Half term: Monday 31st May to Friday 4th June

Training day: Monday 7th June

End of term: Wednesday 21st July

Summer holiday: Thursday 22nd July to Wednesday 1st September

For Warwickshire school term dates please [click here](#).

* School and nursery are closed to all children during bank holidays, training days and holiday periods.

In Collective Worship

this week ...

In collective worship this week, we have used Picture News to explore events in the wider world, particularly thinking about Eid this week. We have also introduced our learning behaviour this half term, considering how we can demonstrate these skills in our lessons.



Christian Value this

half term



Learning Behaviour this


half term

Wise Owl




- * I can use the resources on my table and in the classroom to help me.
- ** I can use the working wall, phonics mats and knowledge organisers to find information to help me.
- *** I use things I already know to make links and help me learn new information.

Mental Health Support



**Mental Health in Schools Team
Tips For Wellness
Listening**

Listening is an important skill that helps us to feel connected to others and the world around us. When we listen, we can learn new things, solve problems and interact with people around us. This is great for our mental health as we are using our minds and connecting with people.



Try out these games to test your listening skills:

1 - Sound hunt!
Close your eyes and listen carefully to the sounds around you. See how many sounds you can identify in a minute.
This type of listening activity helps us to connect with the world around us, which can help us to feel calm.

2 - Weekend catch up
In pairs, partners should take it in turns to talk for 1 minute about their weekend. The children should then ask each other questions about their weekend, to see if the listener could remember what they did. Each partner can score points for each question they answered correctly.

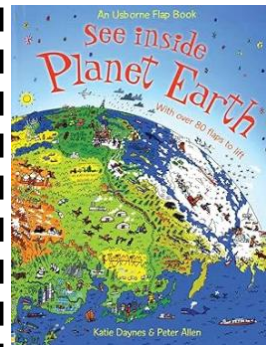
3 - I went to the supermarket, and I bought a...
As a class, sit in a circle. The first person says, "I went to the supermarket, and I bought a..." and they choose an item, for example an apple. The next person has to repeat that sentence and choose their own item to add. For example, "I went to the supermarket, and I bought an apple and a book". Keep going around the circle adding items. If someone forgets an item, you move onto the next player. It gets harder as you go!

These two games encourage 'active listening', where you are taking in the information you are hearing. This is a useful skill to practice. You can also practice this at home, trying to remember what you have heard on a programme or video!

In Coventry and Warwickshire, for any urgent mental health concerns, contact the RISE Crisis Helpline available 24/7, by calling NHS 111. Alternatively, call 999 or visit A&E in an emergency, for example if medical attention is required.

MHST are available to support you and your school throughout the school year including term time and school holidays.
Please contact your school's Mental Health Lead for information and advice.

Book of the week



Title: See Inside Planet Earth

Author: Katie Daynes, Peter Allen

Recommended by: Matteo

Matteo has enjoyed sharing this non fiction book from the KS1 classroom to explore facts about the Earth, including its gases, oceans, mountains, and changing climates.

E-Safety tip of the week



This week's top tip for parents to keep children safe online.

Please find the [link](#) to the online safety tips.

Special Educational Needs and Disabilities

The Warwickshire Local Authority monthly SEND newsletter can be found here. [Click link](#)

The Warwickshire SEND local offer can be found here. [Click link](#)

Families can request free advice and support through Warwickshire SENDIASS [Click link](#)

Government Consultation

Please find a link to the government consultation on further measures to prepare children for the future in an age of rapid technological change. This includes potential age restrictions on social media and other services such as gaming sites and AI chatbots, restrictions on addictive design features and risky functionalities, and better support for parents and families.

[Click here to access the government consultation](#)

Family Support

Families can access free parenting courses through Eventbrite [here](#).

Click on [Family Information Service](#) for a wide range of information to support families, or to request support.

