



# Leamington Hastings C of E Academy

## Plant, Grow, Flourish



Newsletter number: 38

Date: 11.07.25

We have had a great week in school, making the most of the summer weather. A huge thank you to all our amazing families for your generous support of our Teddy Bears' Picnic in aid of Birmingham Children's Hospital. Thanks to your kindness, we raised a lot of money, helping a charity that means so much to many families in our community. The children had a fantastic time spending the day with their teddy bears, and your donations will go towards supporting the hospital's vital work for seriously ill children.



The children have been busy rehearsing for their end of year play. I have heard some of the songs being sung down the corridor and in classrooms and they sound amazing. It sounds like you are in for a real treat! Just a reminder that you do need to bring your tickets with you on the day so that we can ensure we don't have too many people within the hall.



Next week is a very busy week, so please do keep an eye on the diary dates and Class Dojo.

Wishing you all a lovely weekend in the sunshine.

Suzanne Marson

Headteacher



## **PUPIL ACHIEVEMENTS THIS WEEK**

### **LEARNING BEHAVIOUR OF THE WEEK**

**Eagle Owls: Joe, Zara**

**Snowy Owls: Edith, Matthew**

### **LEARNER OF THE WEEK**

**Eagle Owls: Ava**

**Snowy Owls: Benjamin, Evelyn**

### **5 READS RAFFLE TICKET:**

**Eagle Owls: Ava**

**Snowy Owls: Barney, Evelyn**

### **CAUGHT SHOWING VALUES**

**Courage: Zara, Matthew, Lucas, Sam**

**Forgiveness: Autumn, Benjamin,**

**Generosity: Benjamin, Max, Ava, Georgia, Emily,**

**Zara, Sam, Aeryn, Leela, Lilia x 2, Sophia L,**

**Friendship: Will, Sophia O, Benjamin, Edith**

**Thankfulness: Evelyn, Sadie, Evie, Zara, Jacob, Lilia, Edith, Leela**

**Truthfulness: Jude**

### **ACHIEVEMENTS FROM HOME:**

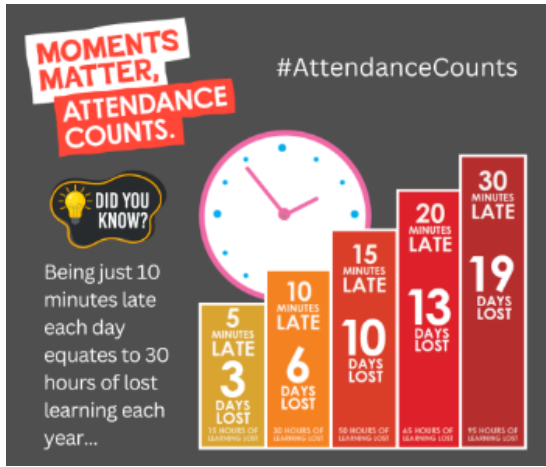
**Achievements this week include rugby, running, gymnastics and grade 4 trumpet (an amazing achievement for a 7 year old).**





Any new dates will be added in red

Friday 11th July	<p><b>Reports home to parents</b></p> <p>Reports sent home via email.</p>
Monday 14th July	<p><b>Open evening for children who will be in year 3 at Dunchurch Juniors in September 2025</b></p> <p>If your child will be joining Dunchurch Juniors in year 3 in September 2025, you are invited to go into the school to see the year 3 classrooms and speak to school staff. School will be open from 3:30pm—5pm.</p>
Tuesday 15th July	<p><b>Open evening</b></p> <p>Parents are invited to come into school with their children to view their children’s work and to visit the classrooms from 3:30—5:00pm. Class teachers will be available to speak to about reports if you would like to. Miss Scofield will be available for any SEND conversations. Mrs Marson will be available for any drop ins.</p>
Wednesday 16th July	<p><b>End of year performance</b></p> <p>All children in school will take part in an end of year performance. Two family members per child are invited to join us in the school hall for a 2:30pm start. Tickets will be sent home from the school office— please bring these with you on the day.</p>
Thursday 17th July	<p><b>End of year performance</b></p> <p>All children in school will take part in an end of year performance. Two family members per child are invited to join us in the school hall for a 9:15am start. Tickets will be sent home from the school office— please bring these with you on the day.</p>
Thursday 17th July	<p><b>End of year church service</b></p> <p>All children in in school will take part in an end of term church service at All Saints Church, including school memories from the year two children. The church service will start at approximately 1:45pm, and all parents and wider family members are invited to join us. <b>If you would be able to help with walking the children to and from the church, we would appreciate it. Please let the school office know if you are available to help. Please consent to this trip via ParentPay.</b></p>
Wednesday 3rd September	<p><b>Start of Autumn term</b></p> <p>All children return to school.</p>



## Attendance Weekly Summary

### Whole school: 95.36% (Target 97%)

Reception	Year 1	Year 2
100%	96%	89%

### PE Days

Children should wear their P.E. kits to school on the following days:



Monday	Tuesday	Wednesday	Thursday	Friday
Early Years KS1	-	-	-	Early Years KS1

### After School Clubs: Summer term 2

Monday	Tuesday	Wednesday	Thursday	Friday
Arts & Crafts	Gardening	Playground Games	Hockey	Dance Club

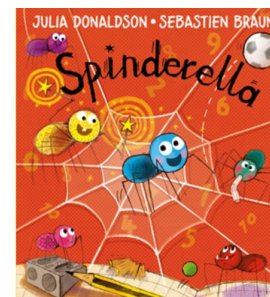
## BOOK OF THE WEEK

**Title:** Spinderella

**Author:** Julia Donaldson

**Recommended by:** Lilia

Lilia recommended this fiction book containing cute sparkly football playing spiders and a hairy godmother.



## ONLINE SAFETY TIP OF THE WEEK

# childline



This week's top tip for parents to  
keep children safe online.

Please find the [link](#) to the online safety tips.

## TERM DATES 2024/2025

### Summer Term 2025

End of Term Friday 18th July

**Disaggregated Teacher Training Day Monday  
21st July**

### Autumn Term 2025

**Teacher training days Monday 1st September &  
Tuesday 2nd September**

Term Starts Wednesday 3rd September

**Teacher Training Day Friday 24th October**

Half term: Monday 27th October to Friday 31st  
October

End of Term Friday 19th December

### Spring Term 2026

Start of Term: Monday 5th January

Half Term: Monday 16th February to Friday 20th  
February

**Teacher Training Day: Monday 23rd February**

End of term: Friday 27th March

### Summer Term 2026

Start of Term Monday 13th April

Half Term: Monday 25th May to Friday 29th May

**Teacher Training Day: Monday 1st June**

End of Term: Friday 17th July

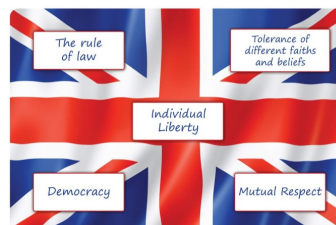
**Disaggregated Teacher Training Day: Monday  
20th July**

For Warwickshire school term dates please [click](#)

## COLLECTIVE WORSHIP

In collective worship this week, we have continued to consider our British Values. We have also been rehearsing songs ready for our church service—we hope that you can join us!

## BRITISH VALUES



## CHRISTIAN VALUE



## LEARNING BEHAVIOUR

### Wise Owl



- \* I can use the resources on my table and in the classroom to help me.
- \*\* I can use the working wall, phonics mats and knowledge organisers to find information to help me.
- \*\*\* I use things I already know to make links and help me learn new information.

There is something for everyone at All Star Kids Club

# ALL STAR Kids Club

## KIDS SUMMER CLUB

£230

KIDS HOLIDAY CLUB IN A SAFE & WELCOMING ENVIRONMENT!  
FUN, EXCITING ACTIVITIES FOR CHILDREN  
5-11 YEARS  
9AM - 3.30PM  
EARLY DROP OFF & LATE PICK UP AVAILABLE

Week 1  
22ND - 24TH JULY

Week 2  
28TH - 31ST JULY

Week 3  
4TH - 7TH AUG

MAKE NEW FRIENDS, TRY SOMETHING NEW & HAVE SO MUCH FUN!

- Performing Arts
- Themed activities
- Multi sports
- Team building
- So much more...

Leamington Hastings COFE Academy  
Birdingbury Road, Hill, Rugby  
Warwickshire CV23 8EA

**BOOK NOW**

More Information 07823322803/07815991083  
allstarkidsclub@gmail.com

### MHST

## Calm: A Worry Workshop for Families

Where When Times

St. Michael's Children & Family Centre, Bedworth CV12 9DA	Monday 28 <sup>th</sup> July & Monday 11 <sup>th</sup> August 2025	10.30am - 12.30pm
Claremont Children and Families Centre, Rugby CV21 3LU	Monday 28 <sup>th</sup> July & Monday 11 <sup>th</sup> August 2025	10.30am - 12.30pm
Lilington Children and Families Centre, Leamington Spa CV32 7QE	Monday 28 <sup>th</sup> July & Monday 11 <sup>th</sup> August 2025	1pm - 3pm
The Moat Family Hub, Coventry CV2 1EQ	Monday 4 <sup>th</sup> August 2025	2pm - 4pm
Families For All Hub, Coventry CV6 5LB	Wednesday 20 <sup>th</sup> August 2025	10.30am - 12.30pm

**RISE**

### MHST

## Calm: A Worry Workshop for Families

Does your child have worries?

Explore how to manage anxiety and help cope with worries about returning to school, new starts and changes. This interactive and fun workshop is for parents/carers and children to learn and practice ways to manage anxious feelings together.

For children 4 years and older accompanied by their parents/carers

You can also speak to an Education Mental Health Practitioner to see if a referral directly into our service would be helpful for you and your child.

To book please email: [risecommunityoffer@covwarkpt.nhs.uk](mailto:risecommunityoffer@covwarkpt.nhs.uk)  
Or call: 07917504682

Please check that your child attends an MHST school  
<https://cwrise.com/mhst/>

**RISE**

### MHST

## 5 Ways to Wellbeing Together

Where When Times

St. Michael's Children & Family Centre, Bedworth CV12 9DA	Monday 4 <sup>th</sup> August & Monday 18 <sup>th</sup> August 2025	10.30am - 1.30pm
Claremont Children and Families Centre, Rugby CV21 3LU	Monday 4 <sup>th</sup> August & Monday 18 <sup>th</sup> August 2025	10.30am - 1.30pm
Stratford Children and Families Centre, Stratford upon Avon CV37 9PB	Thursday 7 <sup>th</sup> August & Thursday 21 <sup>st</sup> August 2025	10.30am - 1.30pm
Families For All Hub, Coventry CV6 5LB	Monday 28 <sup>th</sup> July 2025	10.30am - 1.30pm
Mosaic Family Hub, Coventry CV4 9PM	Friday 15 <sup>th</sup> August 2025	10.30am - 1.30pm

**RISE**

### MHST

## 5 Ways to Wellbeing Together

Would you like to support your child's wellbeing?

Join us for a fun, interactive workshop where you'll discover the 5 ways of wellbeing to stay mentally healthy together.

For children 4 years and older accompanied by their parents/carers

You can also speak to an Education Mental Health Practitioner to see if a referral directly into our service would be helpful for you and your child.

To book please email: [risecommunityoffer@covwarkpt.nhs.uk](mailto:risecommunityoffer@covwarkpt.nhs.uk)  
Or call: 07917504682

Please check that your child attends an MHST school  
<https://cwrise.com/mhst/>

**RISE**

## Teacher training days Monday 1st September & Tuesday 2nd September

Term Starts Wednesday 3rd September

Dunchurch Community Library are enthusiastic about this year's theme: Story Garden.

The scheme will launch on the 6<sup>th</sup> July and continue until the start of school in September and will be accompanied by stickers to collect, a medal to achieve and a certificate to record their success.

Dunchurch Community Library, School Street, Dunchurch, CV22 6PA tel: 01788 811355 Open: Tues, Thurs, Fri 10am to 5pm and Sat 10am to 12 noon

### TAKE PART IN THE SUMMER READING CHALLENGE

## Story Garden

Starts on Saturday 5<sup>th</sup> July  
Read books, share what you have been reading and collect your medal & certificate at the end at your local Warwickshire Library.

Find events (SCAN HERE)

How it works

- Find fantastic reads in the library
- Download eBooks or listen to audio books with BorrowBox
- Discuss your reading with your new classmates in Sept

### BARNARDOS

#### Useful Contact Information

<b>Family Information Service</b> Providing information, advice and one-to-one support for families with children & young people aged 0-25. New Free Tel: 0800 408 1558 Tel: 01926 742274 Email: <a href="mailto:if@warwickshire.gov.uk">if@warwickshire.gov.uk</a> <a href="http://www.warwickshire.gov.uk">www.warwickshire.gov.uk</a>	<b>Children and Families Family Connect</b> For concerns about a child's wellbeing Tel: 01926 414144
<b>Breastfeeding Support Drop-in Group for Babies and Toddlers</b> Wednesdays: 10.00-11.30am Claremont Children & Family Centre <a href="http://www.breastfeedingconnect@nhs.net">www.breastfeedingconnect@nhs.net</a> Tel: 01926 626229	<b>Early Support Drop ins at the CFCs</b> Long Lawford Tues - 2.00-4.00pm Claremont Weds - 2.15-4.15pm Boughton Leigh Thurs - 9.30-11.30am Family Support Help Line Monday to Friday: 9.00am to 4.00pm Tel: 01926 412412 <a href="http://www.warwickshire.gov.uk/childrenandfamilies">www.warwickshire.gov.uk/childrenandfamilies</a>
<b>Warwickshire Health Visiting Drop in Clinic</b> Tuesdays: 9.30-11.00am Claremont Children & Family Centre <b>Phone number and TEXT Chat Service</b> Advice & support for parents of pre-school children of Warwickshire Text: 07520 615293 OR Tel: 01788 551212	<b>Midwives</b> Maternity advice, The Owen Building, St. Cross Hospital Tel: 01788 663184
<b>Citizens Advice Bureau</b> Boughton Leigh Children and Family Centre Drop in Mondays 9am-1pm	<b>Adult and Community Learning</b> <a href="https://warwickshire.gov.uk/adl">https://warwickshire.gov.uk/adl</a> Tel: 01926 736392
<b>Speech and Language Therapy Preschool Team</b> Tel: 01788 555107	<b>Citizens Advice Bureau</b> Tel: 0800 250 5715
	<b>Interested in volunteering?</b> please contact <a href="mailto:serena.lampson@barnardos.org.uk">serena.lampson@barnardos.org.uk</a>

### WHAT'S ON GUIDE SUMMER HOLIDAYS

#### Rugby Children & Family Centres

**Rugby Children & Family Centres (CFC):**

- Boughton Leigh Children & Family Centre  
Wetherell Way, Rugby, CV21 1LT Tel: 01788 570347
- Claremont Children & Family Centre  
Claremont Road, Rugby, CV21 3LU Tel: 01788 579488
- Long Lawford Children & Family Centre  
Holbrook Road, Long Lawford, Rugby, CV22 9AL Tel: 01788 551313  
Visit our new website: <https://coventryandwarwickshire.barnardos.org.uk/>  
Email: [rugbycfc@barnardos.org.uk](mailto:rugbycfc@barnardos.org.uk)

At the Rugby Children and Family Centres, we offer a variety of play sessions, courses and support for children from 0-19yrs (up to 25yrs with SEND) and their families. Please find our timetable enclosed or contact us to find out more.

## Compass

Click for the latest newsletter

Click on <https://www.facebook.com/>

Leamington Hastings Academy Parents Group

Please find the link to the Friends of Leamington Hastings parents group. Please contact Mel Bailey if you have any questions.

Click on [Family Information Service](https://warwickshire.gov.uk)

Click on the [link](https://warwickshire.gov.uk)

For the July/September issue

**allsorts**

Stay up to date with the latest Children & Family Centre news  
@Rugby children and family centres @RugbyCFC

### Rugby Borough Children and Family Centres (CFC) Summer Holidays Timetable 21st July - 22nd August 2025

Monday	Tuesday	Wednesday	Thursday	Friday
<b>Walk-in Wardrobe</b> Pre-loved clothes for 0-5's 9.30am to 11.30am <b>Toy Library</b> 9.30am to 11.30am Claremont CFC	<b>Family Time</b> Booking essential Aimed at 0-8 yrs. 10.00am to 11.30am Boughton Leigh CFC Not taking place 28 <sup>th</sup> August	<b>Baby Chatter Masters</b> 4 week course Booking essential Please see a member of staff 10.00am to 11.00am Claremont CFC Long Lawford CFC 23rd, 30 <sup>th</sup> July, 13 <sup>th</sup> & 20 <sup>th</sup> August	<b>Family Time</b> Booking essential Aimed at 0-8 yrs. 10.00am to 11.30am Claremont CFC Not taking place 28 <sup>th</sup> August	<b>Walk-in Wardrobe</b> Pre-loved clothes for 0-5's 9.30am to 11.30am Claremont CFC
<b>Baby Time</b> Booking essential Non-walkers from birth 10.00am to 11.00am Claremont CFC Not taking place 27 <sup>th</sup> August	<b>Baby Time</b> Booking essential Non-walkers from birth 10.00am to 11.00am The Barn @ Houlton Not taking place 28 <sup>th</sup> August	<b>Little Stars</b> For children with additional needs 10.1am Claremont CFC Not taking place 6 <sup>th</sup> or 27 <sup>th</sup> August	<b>Active Kidz</b> Booking essential Aimed at 0-8 yrs. 7 <sup>th</sup> , 14 <sup>th</sup> & 21 <sup>st</sup> August Holiday club for 5-10 yr olds. Including cooking with Little Chefs and lots of fun activities 1.30-4.00pm Claremont CFC	<b>Toddler Time</b> Booking essential Activities for 0-5 yrs 10.00am to 11.00am Rogers Hall, Hillmorton (CV21 4EN) Not taking place on 22 or 29 August
To book a place on our sessions scan the QR code or follow the link: <a href="https://warwickshire.gov.uk">https://warwickshire.gov.uk</a>	<b>Baby Time</b> Booking Essential Non-walkers from birth 1.30-2.30pm Boughton Leigh CFC Not taking place 28 <sup>th</sup> August	<b>Play Day</b> We are joining Rugby Play Rangers for a day of fun! Wednesday 6th August 11.00am to 3.00pm Whitehall Recreation Ground (CV22 5AA)	<b>PLEASE NOTE</b> There will be no Saturdays in August and there will be no groups on the last week of the summer holidays (25 <sup>th</sup> - 29 <sup>th</sup> August)	<b>Benn Ward Community Fun Day</b> We are joining the Benn Partnership Centre and others for a day of fun Friday 22nd August 11.00am to 3.00pm Millennium Park
	<b>Support &amp; Advice</b> 1-2-1 advice & support available from the centres on a wide range of issues for families with children, young people 0-8 or up to 25 with SEND.	<b>Family Time</b> Booking essential Aimed at 0-8 yrs. 1.30pm to 2.30pm Long Lawford CFC Not taking place 6th or 27th August		<b>Company and Cuddles Baby Time</b> Booking essential* A baby group joining with the residents of Anya Court. <b>PARKING AT SAINSBURYS</b> Non-walkers from birth 2.30pm - 3.00pm Anya Court Care Home (CV22 6JA) Not taking place 29 <sup>th</sup> August