



Leamington Hastings C of E Academy

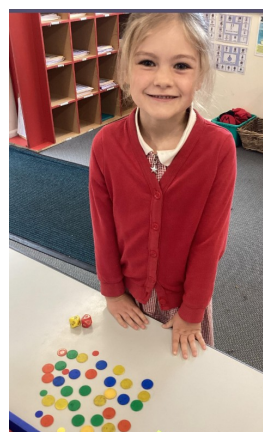
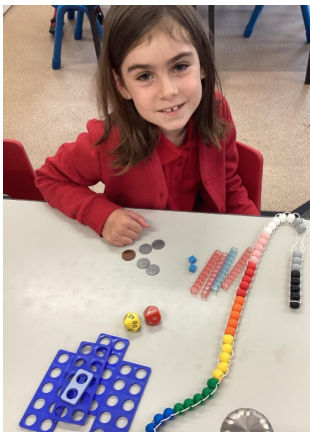
Plant, Grow, Flourish



Newsletter number: 1

Date: 05.09.25

Welcome back to school, with a warm welcome extended to those families who have joined us this academic year. The children have had a great first few days back in school, settling into their new year groups and building new relationships. It has been a joy to hear the sound of learning and happy children around school. The children look very smart in their uniforms and are full of energy, ready to take part in their new learning this half term.



Thank you to those families who have signed up to Class Dojo either at the end of last academic year or during this week. This will continue to be our main way of communicating with you, including the distribution of the newsletter and the half termly letter regarding after school clubs. If you have not yet signed up yet signed up to Dojo, please do so. If you need any help or support with setting up your Dojo account, we are very happy to support you with this. If you do not want to sign up to Class Dojo, paper copies of letters sent home will be available to collect from the school office upon request. The newsletter will also be uploaded onto the school website.



We have started to put together the dates for across this academic year, and have included the September dates within this newsletter. Keep an eye on the diary dates page of the newsletter each week to find out what is coming up next!

We are currently looking to expand our lunch time staff and are advertising for a Midday Supervisor, along with a member of staff to work in our after school club. If you would be interested in either of these roles, please let us know!

Have a lovely weekend everyone, thank you for your support.

Suzanne Marson

Headteacher



PUPIL ACHIEVEMENTS THIS WEEK

LEARNING BEHAVIOUR OF THE WEEK

Eagle Owls: Corrin, Freddie

Snowy Owls: Zara, Ashlyng

PRESENTATION AWARD:

Eagle Owls: Ella, Ava

Snowy Owls: Benjamin

CAUGHT SHOWING VALUES

Courage: Ava, Benjamin Wo x 2, Charlie, Lucas, Millie,
Sophia O, Sophia L, Ella, Sam H, Joe, James U,
Freddie, Leo, Max, Lara, Sam P, Corrin, Autumn,
Lucas, Isaac, Arnie, Isla, Jack

Forgiveness:

Generosity: Jacob, Jude, Max

Friendship: Ashlyng, Sophia L, Freddie

Thankfulness: Georgia, Edith, Zara x 2, Emily, Ava, Will, Jude,
Ashlyng, Benjamin Wr

Truthfulness: Autumn

ACHIEVEMENTS FROM HOME:

Achievements this week include gymnastics



Spotlight on

Safeguarding

At Leamington Hastings, safeguarding and promoting the welfare of children is everyone's responsibility and our top priority. Everyone who comes in to contact with children and their families has a role to play. The children's wellbeing, safety, achievement and happiness underpins every decision we make. Often when safeguarding is mentioned, the immediate thought is about child protection –when a child is suffering harm, or is in danger of suffering harm. However, safeguarding is much more complex than this and encompasses a very wide range of issues. At Leamington Hastings, we ensure that our staff are well trained in all aspects of safeguarding and this training is regularly updated and frequently revisited throughout the year. The members of the school safeguarding team can be seen below:



Mrs Suzanne Marson, Headteacher

Mrs. Marson is the Designated Safeguarding Lead for the school and leads on safeguarding and child protection. Mrs Marson will take the lead where a child has a Child in Need or a Child Protection plan.



Miss Annie Scofield, Deputy Headteacher

Miss Scofield is a Deputy Designated Safeguarding Lead. Miss Scofield will lead on safeguarding and child protection when Mrs Marson is off site, and may attend meetings in Mrs Marson's absence.



Mrs Liz Wooldridge

Mrs Wooldridge leads on all aspects of Early Support (Early Help) and is a Deputy Designated Safeguarding Lead. If you need Early Help support with any issues outlined in the poster to the right, Mrs Wooldridge is your point of contact in school.

Mrs Wooldridge is also the school's Designated Teacher for Looked After Children.

CHILDREN & FAMILY SUPPORT

Information, advice and one to one support for families with children and young people aged 0-25 across Warwickshire on issues including:

- Family relationships
- Special educational needs and disabilities
- Health and wellbeing
- Parenting worries or concerns
- Behaviour management
- Money and debt
- Housing
- Childcare
- Legal advice
- Sleep advice

For more information on available support visit www.warwickshire.gov.uk/childrenandfamilies

We also ensure that our curriculum provides the children with age- appropriate opportunities to learn how to keep themselves healthy and safe. Safeguarding themes are interwoven throughout our curriculum within school. Some examples include:

- Promotion of our school rules and values
- Promotion of British Values
- Themes and values in collective worships
- Internet Safety days and lessons, with age appropriate activities
- A half termly online safety program for all age groups within school
- Online safety discussions within computing and other relevant lessons
- Involvement in World Mental Health Day, Anti-Bullying Week and Children’s Mental Health Week
- Our PSHE curriculum, including a class charter at the start of each academic year
- Lessons exploring keeping healthy, including topics such as diet, exercise, hygiene and sleep
- The Protective Behaviours curriculum



Warwickshire
Safeguarding



**THIS ORGANISATION
IS COMMITTED TO
SAFEGUARDING AND
PROMOTING THE WELFARE OF
CHILDREN, YOUNG PEOPLE AND
EXPECTS ALL STAFF,
VOLUNTEERS AND PARENTS TO
SHARE THIS COMMITMENT**

If you have concerns that a child is suffering any form of abuse, neglect or cruelty contact the Warwickshire Children and Families Front Door immediately by calling
01926 414144

Lines are open Monday to Thursday
8.30am - 5.30pm, Friday 8.30am - 5.00pm

If you need to get in touch out of usual office hours, please contact the Emergency Duty Team immediately by calling
01926 886922

If you think a child is at immediate risk contact the Police on
999





Any new dates will be added in red

| | |
|--------------------------|---|
| Wednesday 10th September | Individual School Photographs All children in school will have an individual photograph taken on this day. If your child attends nursery and is not in school on this day, you are welcome to bring your child into school at 9am to have their photograph taken if you would like to. |
| W/C 22nd September | Recycling Week Across the week we will be considering how we can recycle more of our waste. |
| Tuesday 23rd September | Curriculum Evenings Parents are invited to come into school to find out what their children will be taught over the course of this academic year, including how we teach reading, writing and maths. Please enter and leave the school via the school office and make your way to the year group classrooms. There will be a session for each Key Stage to accommodate those who would like to attend both sessions. Slides will be uploaded to Dojo after the session. Please arrive for a 4:30pm start in Key Stage One (years 1 and 2) and a 5:15pm start in EYFS (nursery and reception). |
| Friday 26th September | Language Day To celebrate the rich diversity of our society, we challenge the children to come into school ready to answer the register with a greeting in any language of their choice. |
| Monday 29th September | World Heart Day We will be holding a fundraising day with proceeds to be split between Birmingham Children's Hospital who have supported several of our children in school, and Our Jay Foundation. Children are invited to come into school wearing non-uniform, including something red, for a voluntary donation. |
| Monday 29th September | Harvest Festival Collections Children throughout the school are welcome to bring any donations of non-perishable goods into school before the end of this week as part of Harvest Festival. All donations will be delivered to Hope 4, Rugby Foodbank. |
| Monday 29th September | Parent's Evening Booking Opens Please contact the school office via telephone or email to book your child's parent's evening slot from today. Parent's evenings will take place on the 21st and 22nd of October, between 3:15pm and 6pm |

MOMENTS MATTER, ATTENDANCE COUNTS. #AttendanceCounts

DID YOU KNOW?

Being just 10 minutes late each day equates to 30 hours of lost learning each year...

| | | | | |
|-------------------------------|--------------------------------|---------------------------------|---------------------------------|---------------------------------|
| 5 MINUTES LATE 3 DAYS LOST | 10 MINUTES LATE 6 DAYS LOST | 15 MINUTES LATE 10 DAYS LOST | 20 MINUTES LATE 13 DAYS LOST | 30 MINUTES LATE 19 DAYS LOST |
|-------------------------------|--------------------------------|---------------------------------|---------------------------------|---------------------------------|

Attendance Weekly Summary

Whole school: 98.25 (Target 97%)

| Reception | Year 1 | Year 2 |
|-----------|--------|--------|
| 100% | 100% | 93% |

PE Days

Children should wear their P.E. kits to school on the following days:



| Monday | Tuesday | Wednesday | Thursday | Friday |
|--------------------|---------|-----------|----------|--------------------|
| Early Years KS1 | - | - | - | Early Years KS1 |

After School Clubs: Summer term 2

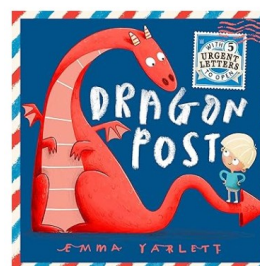
| Monday | Tuesday | Wednesday | Thursday | Friday |
|---------------|-------------------|--------------|-------------|--------------|
| Arts & Crafts | Construction Club | Target Games | Multi Sport | Street Dance |

BOOK OF THE WEEK

Title: Dragon Post

Author: Emma Yarlett

Recommended by: Charlie



Charlie recommended the book this week.

He enjoys sharing this magical adventure book which includes letters to open and share.

ONLINE SAFETY TIP OF THE WEEK



This week's top tip for parents to
keep children safe online.

Please find the [link](#) to the online safety tips.

TERM DATES 2024/2025

Autumn Term 2025

**Teacher training days Monday 1st September &
Tuesday 2nd September**

Term Starts Wednesday 3rd September

Teacher Training Day Friday 24th October

Half term: Monday 27th October to Friday 31st
October

End of Term Friday 19th December

Spring Term 2026

Start of Term: Monday 5th January

Half Term: Monday 16th February to Friday 20th
February

Teacher Training Day: Monday 23rd February

End of term: Friday 27th March

Summer Term 2026

Start of Term Monday 13th April

Half Term: Monday 25th May to Friday 29th May

Teacher Training Day: Monday 1st June

End of Term: Friday 17th July

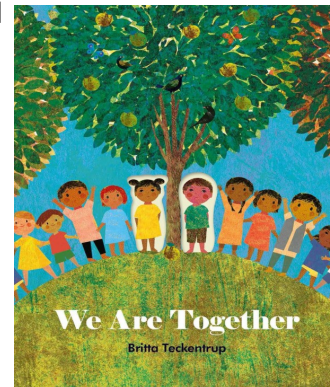
**Disaggregated Teacher Training Day: Monday
20th July**

For Warwickshire school term dates please [click
here.](#)

COLLECTIVE WORSHIP

In collective worship this week we have read
the book 'We are together', focussing on how
we can work and play together so that every-
one is included.

We have also started
to learn some well
known songs within
singing worship, and
explored the re-
wards that we can
earn within school
on a Friday.



CHRISTIAN VALUE



LEARNING BEHAVIOUR

Team Meerkat



- *I can listen to a partner carefully.
- **I can share my ideas with a small group.
- *** I can explain tasks to other people.

WHAT'S ON GUIDE

Rugby Children & Family Centres

1st September 2025 - 24th October 2025

Family Information Service
Providing information, advice and one-to-one support for families with children & young people aged 0-25.
New Free Tel: 0800 408 1558
Email: family@warwickshire.gov.uk
www.warwickshire.gov.uk/fis

Warwickshire Family Connect
For concerns about a child's wellbeing
Tel: 01926 414144

Early Support
Drop ins at the CFCs
Long Lawford Tues - 2.00-4.00pm
Claremont Weds - 2.15-4.15pm
Boughton Leigh Thurs - 9.30-11.30am
Family Support Help Line
Monday to Friday: 9.00am to 4.00pm
Tel: 01926 412412
www.warwickshire.gov.uk/childrenandfamilies

Midwives
Maternity advice,
The Owen Building, St. Cross Hospital
Tel: 01788 663184

Adult and Community Learning
<https://www.warwickshire.gov.uk/acc/>
Tel: 01926 736392

Speech and Language Therapy Preschool Team
Tel: 01788 555107

HCRC Sexual Health & Contraception Drop-in
2nd Wednesday of the month
Claremont Children and Family Centre
9.30-11.30am

Interested in volunteering?
serena.leswell@barnardos.org.uk

Rugby Children & Family Centres (CFC)
Boughton Leigh Children & Family Centre
Walswood Way, Rugby
CV21 3LT Tel: 01788 579347

Claremont Children & Family Centre
Claremont Road, Rugby
CV21 3LU Tel: 01788 579488

Long Lawford Children & Family Centre
Holbrook Road, Long Lawford,
Rugby, CV23 8AL Tel: 01788 561313
Email: rugbycfc@barnardos.org.uk

Family Voice Drop in 29th September 9.30-11.45am
Claremont Children & Family Centre
We want to hear from you! We're welcoming parents, carers and family members to share their thoughts and help shape the services and support we provide to families within the Rugby Borough community.
Call in for a few minutes and chat to Sara and Serena.

At the Rugby Children and Family Centres, we offer a variety of play sessions, activities and support for children from 0-19yrs (up to 25yrs with SEND) and their families. Please find our timetable enclosed or contact us to find out more.

MHST

Mental Health in Schools Team

Tips For Wellness

Going back to school

Going back to school can be stressful, so check in with your young person and keep the conversation open about how they're feeling. Help them find and keep a good routine (regular wake-up, meal and bedtime schedules) and try to keep these on the weekend to help them adjust quickly to the school day rhythm. Remember to celebrate small wins, offer praise and try to stay patient if your child struggles with the new routine.

Activities to Support Your Young Person's First Weeks of School

The transition back to school is a great time to use activities that boost your young person's confidence, reduce anxiety, and build strong routines. Here are some ideas to try during those first few weeks:

- 1. Morning Check-in Ritual:** Start each school day with a simple ritual—like a hug, a positive affirmation, or a quick chat about what they're looking forward to. This helps set a calm, positive tone.
- 2. After-School Decompression Time:** Plan 20–30 minutes of quiet time after school for your young person to unwind. Reading, drawing, or light play can help them process the day and relax before homework or chores.
- 3. Homework Kickoff Activity:** Create a fun "homework kickoff" routine like a special snack, background music, or a 5-minute movement break before starting homework. It helps shift their mindset into focus mode.
- 4. Organisational Games:** Turn organising school supplies or packing the backpack into a quick game or challenge—who can find and pack items the fastest? Making organisation fun encourages responsibility.
- 5. Weekend Family Planning Session:** Spend time on the weekend planning the upcoming week together. Discuss after-school activities, school projects, and family events. This builds anticipation and helps your young people feel involved.
- 6. Gratitude or Highlight Jar:** Keep a jar where your child can drop notes about something good that happened at school each day. Review them together weekly to focus on positives and build resilience.

Tips for going back to school

Webinar about the transition to secondary school

In Coventry and Warwickshire, for any urgent mental health concerns, contact the RISE Crisis Helpline available 24/7, by calling NHS 111. Alternatively, call 999 or visit A&E in an emergency, for example if medical attention is required.

MHST are available to support you and your school throughout the school year including term time and school holidays.

Please contact your school's Mental Health Lead for information and advice.

Rugby Borough Children and Family Centres (CFC)

Autumn Timetable 1st September 2025 - 24th October 2025

| Monday | Tuesday | Wednesday | Thursday | Friday |
|---|---|--|--|---|
| Walk-in Wardrobe Pre-loved clothes for 0-5's 9.30am to 11.30am Toy Library 9.30am to 11.30am Claremont CFC | Toddler Time Booking essential* Aimed at 0-5 years 10.00am to 11.30am Boughton Leigh CFC | Walk-in Wardrobe Pre-loved clothes for 0-5's 12.00-2.00pm Claremont CFC | Story Explorers Aimed at 20months to 4yrs Booking essential* 10:00am - 11:00am Long Lawford CFC starting 18th September | Walk-in Wardrobe Pre-loved clothes for 0-5's 9.30am to 11.30am Claremont CFC |
| Baby Time Non-walkers from birth 10.00-11.00am Claremont CFC | Baby Signing Booking essential* Aimed at 0-5 years 10.00am to 11.30am BEC @ Woodlands CV22 6JZ starting 22nd September 2025 | Little Stars For children with additional needs 10.00am to 11.00am Claremont CFC | Toddler Time Booking essential* Aimed at 0-5 years 10.00am to 11.30am Claremont CFC | Toddler Time Aimed at 0-5 years 10.00am to 11.00am Rogers Hall (CV21 4EN) |
| Toddler Time Booking essential* Aimed at 0-5 years 10.00am to 11.30am Long Lawford CFC Starting 8 th September | Baby Time Non-walkers from birth 10.00am to 11.00am The Barn @ Houlton (CV23 1AK) | Baby Massage Booking essential* 10:00am - 11:00am Boughton Leigh CFC starting 17th September 2025 | Toddler Chatter Matters Booking essential* 1.30-2.30pm Claremont CFC starting 18th September 2025 | Company and Cuddles Baby Time Booking essential* A baby group joining with the residents of Anya Court PARKING AT SAINSBURYS Non-walkers from birth 2:00pm - 3:00pm Anya Court Care Home (CV22 6JA) |
| Family ESOL Aimed at 20months to 4yrs Booking Essential* 1.00-2.00pm Claremont CFC starting on the 15 th September | Baby REAL Non-walkers up to 10mths Booking essential* 1:00pm - 2:00pm Claremont CFC starting 16th September | Baby & Toddler Time Non-walkers to 5yrs 2:00-3:00pm Cawston Community Hall (CV22 7GU) | Computer Explorers Tech Club Booking essential (see flyer)* 3:45-4:45pm 5- 11yrs Claremont CFC | Saturdays Stay and Play session for dads and male carers 2 nd Saturday of the month 10.00-11.30am Monthly dates: 13 th September & 11 th October Claremont CFC |
| Creative Explorers Aimed at 20months-4yrs Booking essential* 1.00-2.00pm Boughton Leigh CFC Starting on the 15th September | Toddler Time Aimed at 0-5 years 1:30pm - 2:30pm Overlade Community Centre (CV22 6AZ) | Baby Chatter Matters Booking essential* 1.30-2.30pm Long Lawford CFC starting 17th September 2025 | TO BOOK a place on our sessions scan the QR code or follow the link: https://rugbycfc.eventbrite.com | |
| Baby Time Non-walkers from birth 1.30-2.30pm Long Lawford CFC Starting 8 th September | Baby Time Non-walkers from birth 1:30pm-2:30pm Boughton Leigh CFC | AK Coaching Booking essential* 3:45-4.45pm 5- 11yrs Claremont CFC | | |

Family Support Worker Consultations

Would you like the opportunity to chat with a Family Support Worker?

We can support with:

- Developing routines and boundaries
- Understanding your child's behaviour
- Supporting your child's emotional and mental health
- Family and Relationship support
- Signposting and referrals

Phone 01926 414144 option 1 then option 2 Monday to Friday 9am-4pm (except bank holidays) or scan the QR code to find out where you can attend a face-to-face drop in.

Information on Early Support can be found by scanning the QR code below

Compass

Click for the latest newsletter

WELCOME TO THE FAMILY INFORMATION SERVICE NEWSLETTER

SPECIAL EDITION

Click on [Family Information Service](#) for further information

<https://www.facebook.com/>

Please find the link to the Friends of Leamington Hastings parents group.

Leamington Hastings Academy Parents Group

INTRO TO INSTRUMENTS

-A New Music Scheme For Y1 & Y2

Starting September 2025

What is it?

Your child will try out lots of instruments!

These are weekly lessons in small groups of 2-5. Every half term the students will try a different instrument, giving them the opportunity to find out which one they like best.

What are the instruments?

Ukulele, guitar, keyboard, recorder, drums & singing.

How much does it cost?

Each session will cost £7.50 and lasts 20-25 minutes depending on group size.

Do I need to buy these instruments?

No you do not. Smaller instruments like ukulele and recorder can be borrowed and taken home. Larger instruments like drums and guitar cannot be taken home but will be used in the lesson.

Lessons are casual

These sessions are designed to explore each instrument and have fun, drums & singing.

Moving Forward

From Y3+ your child can choose to have specialised lessons in their favourite instrument.

Register your interest : chris@truemusic.uk www.truemusic.uk

Tax-Free Childcare

[Please click the link for further information](#)