



PLACE VALUE (WITHIN 20)

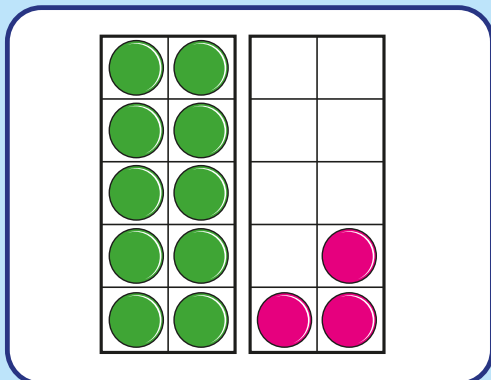
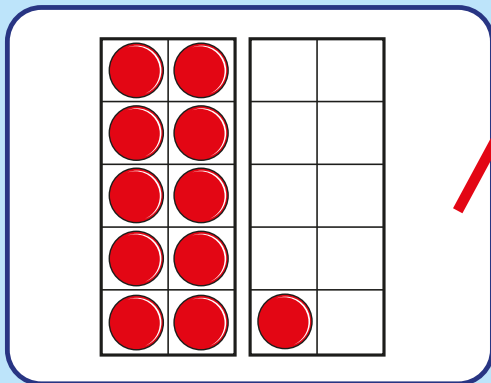
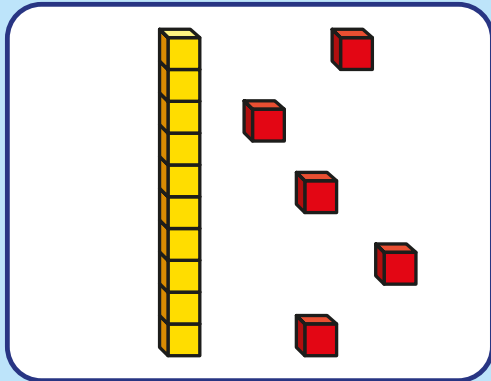
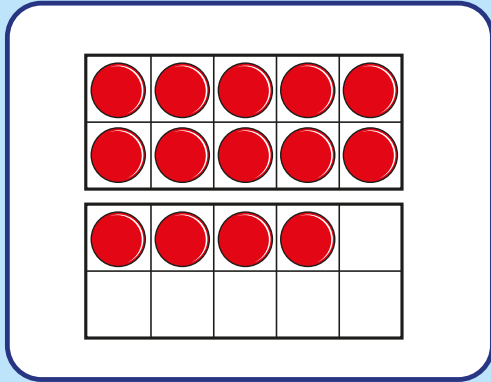
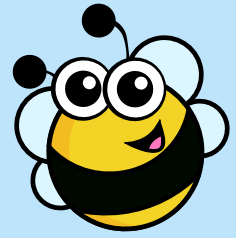
White
Rose
Maths



From White Rose Maths schemes for Year 1 Autumn Term
BLOCK 4 - PLACE VALUE (WITHIN 20)

1 Match the representations to the numbers.

One has been done for you.

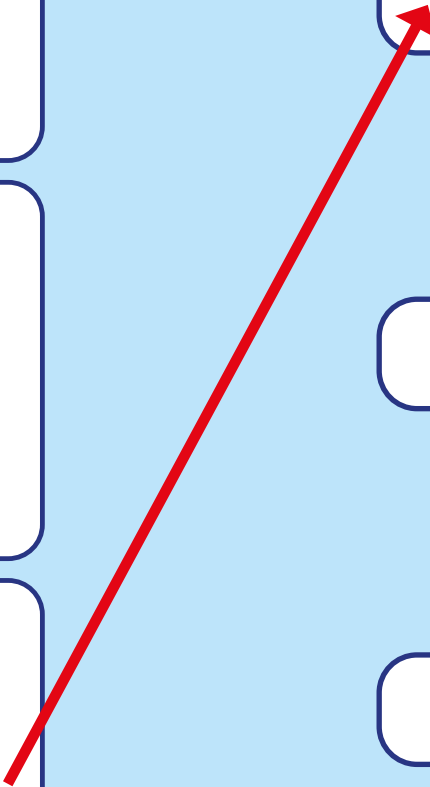


eleven

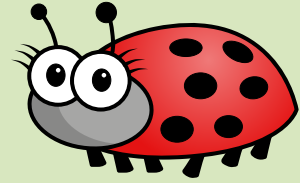
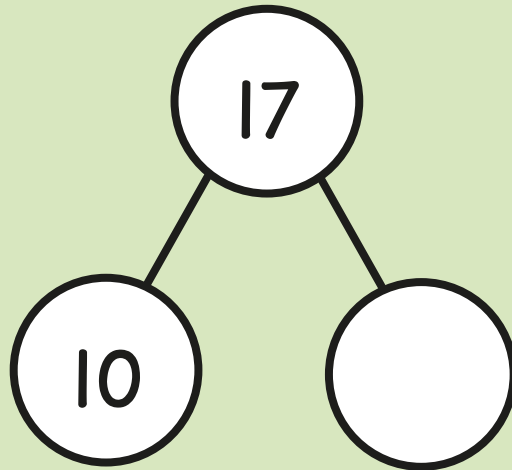
13

fifteen

14



2 Complete the part-whole model.



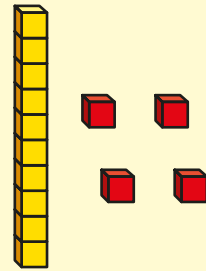
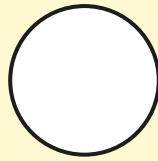
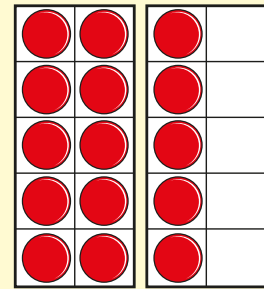
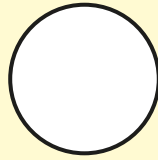
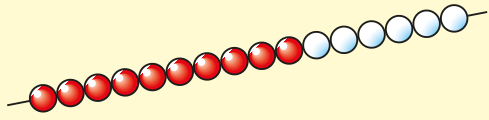
3 Fill in the missing numbers.



4 Draw counters to complete the table.

One less	Number	One more
<p>A 5x2 grid of red counters and a 5x2 empty grid.</p>	<p>A 5x2 grid of red counters and a 5x2 grid with 4 red counters.</p>	<p>A 5x2 grid of red counters and a 5x2 empty grid.</p>

- 5 Write $<$, $>$ or $=$ to compare the representations.



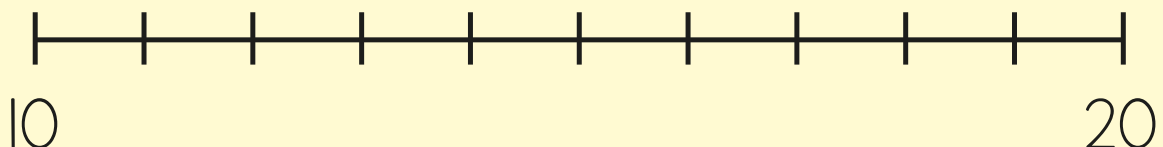
- 6 Complete the sentences.

_____ is one more than eleven.

16 is one more than



- 7 Draw an arrow to the number 18



- 8 Order the numbers from smallest to greatest.

18

11

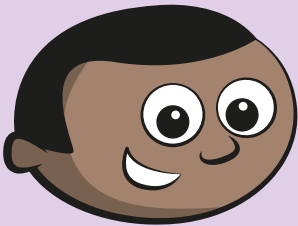
15

14

smallest

greatest

9

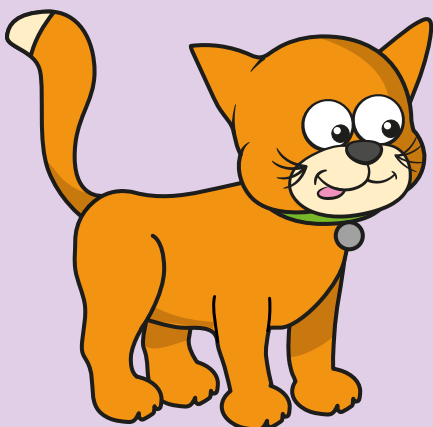


My number is less than 20, but greater than 15

Mo

What could Mo's number be?

Write two possible answers.



or

Answers



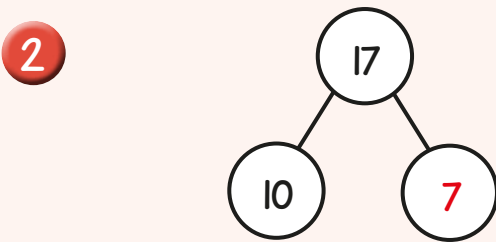
1

eleven

13

fifteen

14



3

11	12	13	14	15	16	17
----	----	----	----	----	----	----

4

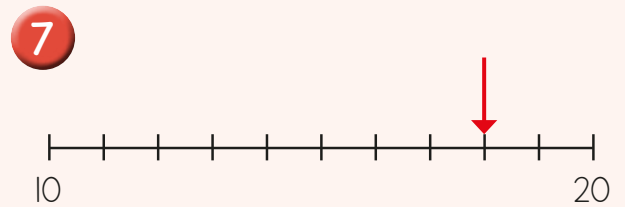
One less	One less	One more

5

>

=

6 Twelve is one more than eleven.
16 is one more than 15



8 11, 14, 15, 18

9 16, 17, 18, 19

