

Biology – What is a Plant?

Prior Learning

There are many differences between plants eg not all plants have flowers, and there are different shaped leaves

Plants require regular watering to keep them healthy

Trees are a type of plant. They can be evergreen or deciduous

Concepts

Observation – looking closely and recording what is seen.

Living thing – Living things have characteristics in common, such as growing, moving, reproducing, needing energy

Key Vocabulary

Images, icons and maps.

plant	Plants are a large group of living things that use sunlight to make their own food
leaves	Leaves collect energy from the Sun and turn this into food for the plant.
stem	The stem supports the plant above the ground. It also helps to carry water and minerals from the roots to the leaves.
roots	Roots absorb water and minerals from the ground. They also help the plant to stay standing in the ground
Flower (and blossom)	Flowers attract insects to help the plant to reproduce (to make more plants).
petal	Part of the flower that is brightly coloured.
Bulb and seed	Plants grow from seeds and bulbs. They do not need sunlight in order to grow. They already have their own <u>food store</u> inside them.

Key Facts

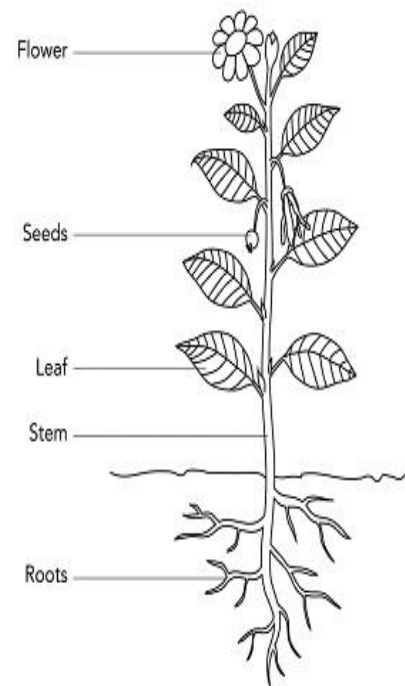
Plants are living things

Plants get their energy from the sun

Plants need water, sun and air to stay alive.

They grow better if they have nutrient rich soil and warmth.

Plants have a life cycle



Plants can grow from seeds or bulbs - seeds bulbs



Seeds and bulbs germinate and grow into seedlings



Seedlings then grow into mature plants

